

ARG65606 anti-CD54 / ICAM1 antibody

Package: 100 µg
Store at: -20°C

Summary

Product Description	Goat Polyclonal antibody recognizes CD54 / ICAM1
Tested Reactivity	Hu
Tested Application	WB
Host	Goat
Clonality	Polyclonal
Target Name	CD54 / ICAM1
Species	Human
Immunogen	Synthetic peptide around the center region of Human ICAM1 (SNCPDGQSTAKT)
Conjugation	Un-conjugated
Alternate Names	CD54; CD antigen CD54; BB2; P3.58; Intercellular adhesion molecule 1; Major group rhinovirus receptor; ICAM-1

Application Instructions

Application table	Application	Dilution
	WB	1 - 3 µg/ml
Application Note	WB: Recommend incubate at RT for 1h. * The dilutions indicate recommended starting dilutions and the optimal dilutions or concentrations should be determined by the scientist.	

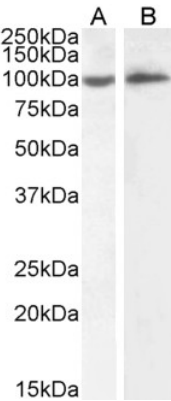
Properties

Form	Liquid
Purification	Affinity purified
Buffer	Tris saline (pH 7.3), 0.02% Sodium azide and 0.5% BSA.
Preservative	0.02% Sodium azide
Stabilizer	0.5% BSA
Concentration	0.5 mg/ml
Storage instruction	For continuous use, store undiluted antibody at 2-8°C for up to a week. For long-term storage, aliquot and store at -20°C or below. Storage in frost free freezers is not recommended. Avoid repeated freeze/thaw cycles. Suggest spin the vial prior to opening. The antibody solution should be gently mixed before use.
Note	For laboratory research only, not for drug, diagnostic or other use.

Bioinformation

Database links	GeneID: 3383 Human Swiss-port # P05362 Human
Gene Symbol	ICAM1
Gene Full Name	intercellular adhesion molecule 1
Background	This gene encodes a cell surface glycoprotein which is typically expressed on endothelial cells and cells of the immune system. It binds to integrins of type CD11a / CD18, or CD11b / CD18 and is also exploited by Rhinovirus as a receptor. [provided by RefSeq, Jul 2008]
Function	ICAM proteins are ligands for the leukocyte adhesion protein LFA-1 (integrin alpha-L/beta-2). During leukocyte trans-endothelial migration, ICAM1 engagement promotes the assembly of endothelial apical cups through ARHGEF26/SGEF and RHOG activation (By similarity). [UniProt]
Research Area	Cell Biology and Cellular Response antibody; Developmental Biology antibody; Immune System antibody; Cytotoxic T Cell Surface Study antibody
Calculated Mw	58 kDa
PTM	Monoubiquitinated, which is promoted by MARCH9 and leads to endocytosis.

Images



ARG65606 anti-CD54 / ICAM1 antibody WB image

Western blot: 35 µg of HeLa (A) and Daudi (B) cell lysates (in RIPA buffer) stained with ARG65606 anti-CD54 / ICAM1 antibody at 2 µg/ml dilution and incubated at RT for 1 hour.