

## ARG65599 anti-IGF1 antibody

Package: 100 µg  
Store at: -20°C

### Summary

Product Description	Goat Polyclonal antibody recognizes IGF1
Tested Reactivity	Hu
Predict Reactivity	Ms, Rat, Cow, Dog, Pig
Tested Application	FACS, ICC/IF, IHC-P, WB
Specificity	This antibody is expected to recognize all reported isoforms (NP_001104753.1; NP_001104754.1; NP_001104755.1; NP_000609.1).
Host	Goat
Clonality	Polyclonal
Isotype	IgG
Target Name	IGF1
Species	Human
Immunogen	C-RSVRAQRHTD
Conjugation	Un-conjugated
Alternate Names	MGF; Insulin-like growth factor I; Mechano growth factor; Somatomedin-C; IGF-I; IGF-I

### Application Instructions

Application table	Application	Dilution
	FACS	10 µg/ml
	ICC/IF	10 µg/ml
	IHC-P	3 - 5 µg/ml
	WB	0.5 - 2 µg/ml
Application Note	WB: Recommend incubate at RT for 1h. IHC-P: Antigen Retrieval: Steam tissue section in Citrate buffer (pH 6.0). * The dilutions indicate recommended starting dilutions and the optimal dilutions or concentrations should be determined by the scientist.	
Positive Control	Human Uterus lysate	

### Properties

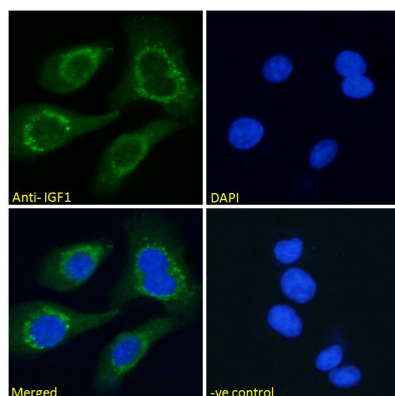
Form	Liquid
Purification	Purified from goat serum by antigen affinity chromatography.
Buffer	Tris saline (pH 7.3), 0.02% Sodium azide and 0.5% BSA.
Preservative	0.02% Sodium azide

Stabilizer	0.5% BSA
Concentration	0.5 mg/ml
Storage instruction	For continuous use, store undiluted antibody at 2-8°C for up to a week. For long-term storage, aliquot and store at -20°C or below. Storage in frost free freezers is not recommended. Avoid repeated freeze/thaw cycles. Suggest spin the vial prior to opening. The antibody solution should be gently mixed before use.
Note	For laboratory research only, not for drug, diagnostic or other use.

## Bioinformation

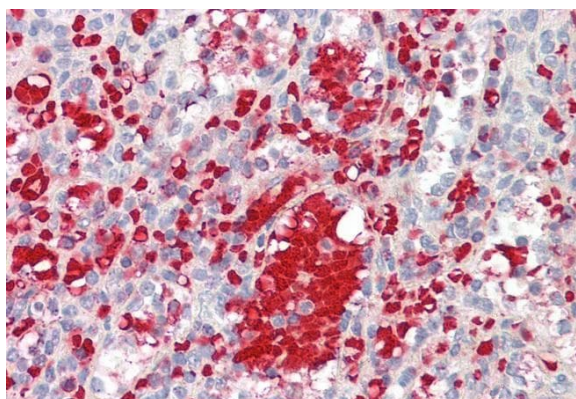
Database links	<a href="#">GeneID: 3479 Human</a> <a href="#">Swiss-port # P05019 Human</a>
Background	The protein encoded by this gene is similar to insulin in function and structure and is a member of a family of proteins involved in mediating growth and development. The encoded protein is processed from a precursor, bound by a specific receptor, and secreted. Defects in this gene are a cause of insulin-like growth factor I deficiency. Several transcript variants encoding different isoforms have been found for this gene.[provided by RefSeq, Mar 2009]
Research Area	Cancer antibody; Developmental Biology antibody; Signaling Transduction antibody
Calculated Mw	22 kDa

## Images



ARG65599 anti-IGF1 antibody ICC/IF image

Immunofluorescence: Paraformaldehyde fixed HEK293 cells permeabilized with 0.15% Triton. Cells were stained with ARG65599 anti-IGF1 antibody (green) at 10 µg/ml dilution for 1 hour. DAPI (blue) for nuclear staining. Negative control: Unimmunized goat IgG (green) at 10 µg/ml dilution.



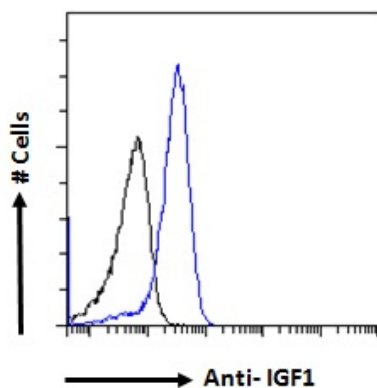
ARG65599 anti-IGF1 antibody IHC-P image

Immunohistochemistry: Paraffin-embedded Human spleen tissue. Antigen Retrieval: Steam tissue section in Citrate buffer (pH 6.0). The tissue section was stained with ARG65599 anti-IGF1 antibody at 3.75 µg/ml dilution followed by AP-staining.



#### ARG65599 anti-IGF1 antibody WB image

Western blot: 35 µg of Human uterus (A) and HepG2 (B, negative control) lysates (in RIPA buffer) stained with ARG65599 anti-IGF1 antibody at 0.5 µg/ml dilution and incubated at RT for 1 hour.



#### ARG65599 anti-IGF1 antibody FACS image

Flow Cytometry: Paraformaldehyde-fixed A549 cells permeabilized with 0.5% Triton. Cells were stained with ARG65599 anti-IGF1 antibody (blue line) at 10 µg/ml dilution for 1 hour, followed by incubation with Alexa FluorR 488 labelled secondary antibody. IgG control: Unimmunized goat IgG (black line).