

## ARG65587 anti-MTCH2 antibody

Package: 100 µl  
Store at: -20°C

### Summary

Product Description	Rabbit Polyclonal antibody recognizes MTCH2
Tested Reactivity	Hu
Tested Application	IHC-P, WB
Host	Rabbit
Clonality	Polyclonal
Isotype	IgG
Target Name	MTCH2
Species	Human
Immunogen	Fusion protein of human MTCH2
Conjugation	Un-conjugated
Alternate Names	MIMP; Met-induced mitochondrial protein; SLC25A50; HSPC032; Mitochondrial carrier homolog 2

### Application Instructions

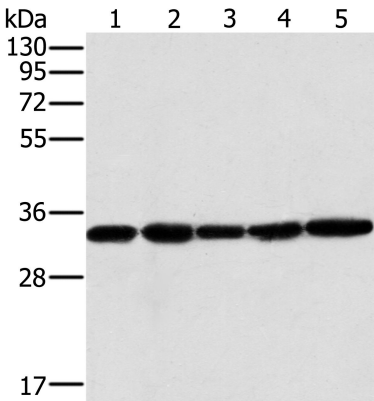
Application table	Application	Dilution
	IHC-P	50-200
	WB	1000-5000
Application Note	* The dilutions indicate recommended starting dilutions and the optimal dilutions or concentrations should be determined by the scientist.	
Positive Control	Human testis tissue and K562 cell, PC3 cell and human liver cancer tissue, HeLa cell	

### Properties

Form	Liquid
Purification	Purified by antigen-affinity chromatography.
Buffer	1XPBS (pH 7.4), 0.05% Sodium azide and 40% Glycerol
Preservative	0.05% Sodium azide
Stabilizer	40% Glycerol
Concentration	2.7 mg/ml
Storage instruction	For continuous use, store undiluted antibody at 2-8°C for up to a week. For long-term storage, aliquot and store at -20°C. Storage in frost free freezers is not recommended. Avoid repeated freeze/thaw cycles. Suggest spin the vial prior to opening. The antibody solution should be gently mixed before use.
Note	For laboratory research only, not for drug, diagnostic or other use.

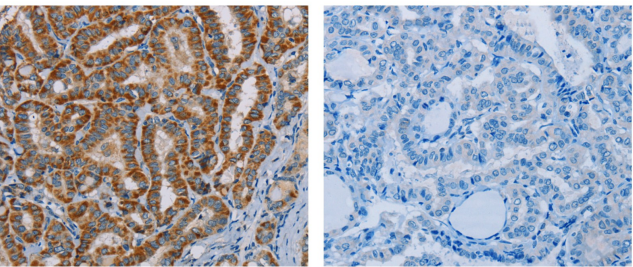
Database links	<a href="#">GeneID: 23788 Human</a> <a href="#">Swiss-port # Q9Y6C9 Human</a>
Gene Symbol	MTCH2
Gene Full Name	mitochondrial carrier 2
Background	Mitochondrial carrier homolog 2 also known as MTCH2 is a protein which in humans is encoded by the MTCH2 gene. MTCH2 (mitochondrial carrier homolog 2), is a 303 amino acid multi-pass mitochondrial membrane protein that contains two solcar repeats and functions to induce mitochondrial depolarization. The substrate transported is not yet known. Induces mitochondrial depolarization.
Function	The substrate transported is not yet known. Induces mitochondrial depolarization. [UniProt]
Highlight	Related products: <a href="#">Anti-Rabbit IgG secondary antibodies:</a> Related poster download: <a href="#">The Structure &amp; Functions of Mitochondria.pdf</a>
Research Area	Cell Biology and Cellular Response antibody; Cell Death antibody; Metabolism antibody; Signaling Transduction antibody
Calculated Mw	33 kDa

Images



ARG65587 anti-MTCH2 antibody WB image

Western Blot: ARG65587 MTCH2 antibody at 1:400 dilution with 40 µg of lysates.  
(1) Human testis tissue  
(2) K562 cell  
(3) PC3 cell  
(4) Human liver cancer tissue  
(5) HeLa cell  
Exposure time: 40 seconds.



ARG65587 anti-MTCH2 antibody IHC-P image

Immunohistochemistry: paraffin-embedded Human thyroid cancer tissue stained with ARG65587 MTCH2 antibody (left) at 1/45 dilution, or the same antibody preincubated with fusion protein (right). (Original magnification: ×200)