

ARG65564 anti-NDUFA2 antibody

Package: 100 µl
Store at: -20°C

Summary

Product Description	Rabbit Polyclonal antibody recognizes NDUFA2
Tested Reactivity	Hu, Ms
Tested Application	IHC-P, WB
Host	Rabbit
Clonality	Polyclonal
Isotype	IgG
Target Name	NDUFA2
Species	Human
Immunogen	Fusion protein of human NDUFA2
Conjugation	Un-conjugated
Alternate Names	CI-B8; Complex I-B8; CD14; NADH-ubiquinone oxidoreductase B8 subunit; CIB8; B8; NADH dehydrogenase [ubiquinone] 1 alpha subcomplex subunit 2

Application Instructions

Application table	Application	Dilution
	IHC-P	25-100
	WB	500-2000
Application Note	* The dilutions indicate recommended starting dilutions and the optimal dilutions or concentrations should be determined by the scientist.	
Positive Control	Raw264.7 cell	

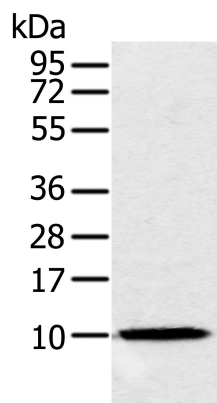
Properties

Form	Liquid
Purification	Purified by antigen-affinity chromatography.
Buffer	1XPBS (pH 7.4), 0.05% Sodium azide and 40% Glycerol
Preservative	0.05% Sodium azide
Stabilizer	40% Glycerol
Concentration	1.9 mg/ml
Storage instruction	For continuous use, store undiluted antibody at 2-8°C for up to a week. For long-term storage, aliquot and store at -20°C. Storage in frost free freezers is not recommended. Avoid repeated freeze/thaw cycles. Suggest spin the vial prior to opening. The antibody solution should be gently mixed before use.
Note	For laboratory research only, not for drug, diagnostic or other use.

Bioinformation

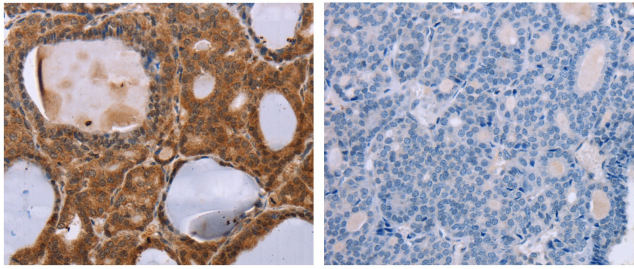
Database links	GeneID: 17991 Mouse GeneID: 4695 Human Swiss-port # O43678 Human Swiss-port # Q9CQ75 Mouse
Gene Symbol	NDUFA2
Gene Full Name	NADH dehydrogenase (ubiquinone) 1 alpha subcomplex, 2, 8kDa
Background	The encoded protein is a subunit of the hydrophobic protein fraction of the NADH:ubiquinone oxidoreductase (complex 1), the first enzyme complex in the electron transport chain located in the inner mitochondrial membrane, and may be involved in regulating complex I activity or its assembly via assistance in redox processes. Mutations in this gene are associated with Leigh syndrome, an early-onset progressive neurodegenerative disorder.
Function	Accessory subunit of the mitochondrial membrane respiratory chain NADH dehydrogenase (Complex I), that is believed not to be involved in catalysis. Complex I functions in the transfer of electrons from NADH to the respiratory chain. The immediate electron acceptor for the enzyme is believed to be ubiquinone. [UniProt]
Highlight	Related products: NDUFA2 antibodies: Anti-Rabbit IgG secondary antibodies: Related poster download: The Structure & Functions of Mitochondria.pdf
Research Area	Cancer antibody; Controls and Markers antibody; Metabolism antibody; Signaling Transduction antibody
Calculated Mw	11 kDa

Images



ARG65564 anti-NDUFA2 antibody WB image

Western blot: ARG65564 anti-NDUFA2 antibody at 1/300 dilution with 40 µg of Raw264.7 cell lysate.
Exposure time: 5 seconds.



ARG65564 anti-NDUF A2 antibody IHC-P image

Immunohistochemistry: Paraffin-embedded Human thyroid cancer tissue stained with ARG65564 anti-NDUF A2 antibody (left) at 1/30 dilution, or the same antibody preincubated with fusion protein (right). (Original magnification: $\times 200$).