

ARG65540 anti-CD24 antibody [SN3]

Package: 100 µg
Store at: -20°C

Summary

Product Description	Mouse Monoclonal antibody [SN3] recognizes CD24
Tested Reactivity	Hu
Tested Application	FACS, ICC/IF, IHC-Fr
Specificity	The antibody SN3 reacts with CD24, a 3545 kDa heavily glycosylated cell surface antigen. CD24 is expressed by granulocytes, B lymphocytes and by some activated T cells and T cell malignancies. It is not expressed on human thymocytes. HLDA IV; WS Code B 136 HLDA V; WS Code B CD24.7
Host	Mouse
Clonality	Monoclonal
Clone	SN3
Isotype	IgG1
Target Name	CD24
Species	Human
Immunogen	Glycoproteins purified from human NALM-1 cell line.
Conjugation	Un-conjugated
Alternate Names	Signal transducer CD24; CD antigen CD24; CD24A; Small cell lung carcinoma cluster 4 antigen

Application Instructions

Application table	Application	Dilution
	FACS	1 - 12 µg/ml
	ICC/IF	1 - 20 µg/ml
	IHC-Fr	Assay-dependent
Application Note	* The dilutions indicate recommended starting dilutions and the optimal dilutions or concentrations should be determined by the scientist.	
Positive Control	Immunohistochemistry (frozen sections): tonsil	

Properties

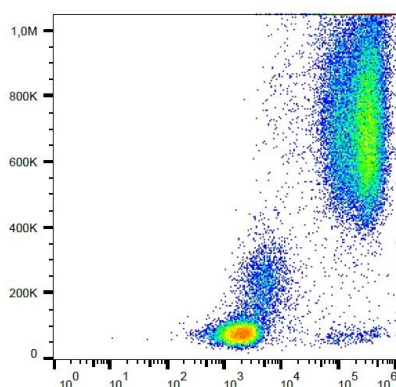
Form	Liquid
Purification	Purified by protein A
Purity	> 95% (by SDS-PAGE)
Buffer	PBS (pH 7.4) and 15 mM Sodium azide

Preservative	15 mM Sodium azide
Concentration	1 mg/ml
Storage instruction	For continuous use, store undiluted antibody at 2-8°C for up to a week. For long-term storage, aliquot and store at -20°C or below. Storage in frost free freezers is not recommended. Avoid repeated freeze/thaw cycles. Suggest spin the vial prior to opening. The antibody solution should be gently mixed before use.
Note	For laboratory research only, not for drug, diagnostic or other use.

Bioinformation

Database links	GeneID: 100133941 Human Swiss-port # P25063 Human
Gene Symbol	CD24
Gene Full Name	CD24 molecule
Background	CD24, also known as heat-stable antigen (HSA) or nectadorin, is a small mucin-like GPI-anchored extracellular membrane glycoprotein expressed on several cell types, including B cells. When B cells are activated and induced to further maturation, however, CD24 begins to disappear. CD24 seems to act as a gate-keeper for lipid rafts, thereby regulating the activity of integrins and other proteins such as the chemokine receptor CXCR4; it is also a ligand for P-selectin. CD24 triggering induces apoptosis of B cell precursors but not in mature resting B cells, where it instead inhibits their ability to proliferate in response to activation. CD24 expression is associated with invasiveness and poorer prognosis of carcinomas and is a marker of exosomes secreted into urine and amniotic fluid.
Function	Modulates B-cell activation responses. Signaling could be triggered by the binding of a lectin-like ligand to the CD24 carbohydrates, and transduced by the release of second messengers derived from the GPI-anchor. Promotes AG-dependent proliferation of B-cells, and prevents their terminal differentiation into antibody-forming cells. [UniProt]
Research Area	Cancer antibody; Developmental Biology antibody; Immune System antibody; Metabolism antibody; Neuroscience antibody
Calculated Mw	8 kDa
PTM	Extensively O-glycosylated.

Images



ARG65540 anti-CD24 antibody [SN3] FACS image

Flow Cytometry: Human peripheral blood cells stained with ARG65540 anti-CD24 antibody [SN3], followed by incubation with APC labelled Goat anti-Mouse secondary antibody.