

ARG65516 anti-CD41 antibody [MWReg30] (PE)

Package: 100 µg
Store at: 4°C

Summary

Product Description	PE-conjugated Rat Monoclonal antibody [MWReg30] recognizes CD41
Tested Reactivity	Ms
Tested Application	FACS
Specificity	The clone MWReg30 recognizes CD41 (GPIIb), a transmembrane glycoprotein (integrin family) composed of two chains GPIIb alpha (heavy chain; 120 kDa) and GPIIb beta (light chain; 23 kDa). CD41 is mainly expressed on platelets and megakaryocytes.
Host	Rat
Clonality	Monoclonal
Clone	MWReg30
Isotype	IgG1
Target Name	CD41
Species	Mouse
Immunogen	Murine platelets
Conjugation	PE
Alternate Names	GTA; GT; GPalpha IIb; PPP1R93; CD41; BDPLT2; BDPLT16; GP2B; Integrin alpha-IIb; GPIIb; Platelet membrane glycoprotein IIb; HPA3; CD antigen CD41; CD41B

Application Instructions

Application table	Application	Dilution
	FACS	1 - 5 µg/ml
Application Note	* The dilutions indicate recommended starting dilutions and the optimal dilutions or concentrations should be determined by the scientist.	

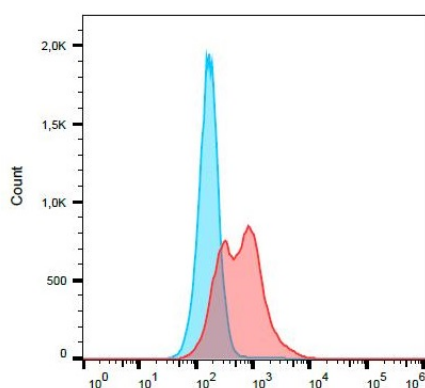
Properties

Form	Liquid
Purification Note	The purified antibody is conjugated with R-Phycoerythrin (PE) under optimum conditions. The conjugate was purified by size-exclusion chromatography.
Buffer	PBS (pH 7.4) and 15 mM Sodium azide
Preservative	15 mM Sodium azide
Concentration	0.5 mg/ml
Storage instruction	Aliquot and store in the dark at 2-8°C. Keep protected from prolonged exposure to light. Avoid repeated freeze/thaw cycles. Suggest spin the vial prior to opening. The antibody solution should be gently mixed before use.

Bioinformation

Database links	GeneID: 16399 Mouse Swiss-port # Q9QUM0 Mouse
Gene Symbol	Itga2b
Gene Full Name	integrin alpha 2b
Background	CD41 (platelet glycoprotein IIb) is composed of two subunits (120 kDa a, alpha and 23 kDa b, beta) that interact with CD61 in the presence of calcium to form a functional adhesive protein receptor. Upon blood vessel damage, this receptor binds to a variety of proteins including von Willebrand factor, fibrinogen, fibronectin and vitronectin. CD41 is mainly expressed on megakaryocyte-platelet lineage, but generally belongs to the antigens that are expressed during early stages of hematopoietic differentiation.
Function	Integrin alpha-IIb/beta-3 is a receptor for fibronectin, fibrinogen, plasminogen, prothrombin, thrombospondin and vitronectin. It recognizes the sequence R-G-D in a wide array of ligands. It recognizes the sequence H-H-L-G-G-A-K-Q-A-G-D-V in fibrinogen gamma chain. Following activation integrin alpha-IIb/beta-3 brings about platelet/platelet interaction through binding of soluble fibrinogen. This step leads to rapid platelet aggregation which physically plugs ruptured endothelial cell surface. [UniProt]
Research Area	Cell Biology and Cellular Response antibody; Developmental Biology antibody; Immune System antibody; Signaling Transduction antibody
Calculated Mw	113 kDa

Images



ARG65516 anti-CD41 antibody [MWReg30] (PE) FACS image

Flow Cytometry: Separation of unstained (blue) and stained (red) murine peripheral blood. Cells were stained with ARG65516 anti-CD41 antibody [MWReg30] (PE) at 9 µg/ml dilution.