

ARG65438 anti-CD35 / CR1 antibody [E11] (FITC)

Package: 50 tests
Store at: 4°C

Summary

Product Description	FITC-conjugated Mouse Monoclonal antibody [E11] recognizes CD35 / CR1
Tested Reactivity	Hu, Bb, Chimp, R. Mk
Tested Application	ELISA, FACS, IHC-Fr, IHC-P, WB
Host	Mouse
Clonality	Monoclonal
Clone	E11
Isotype	IgG1, kappa
Target Name	CD35 / CR1
Species	Human
Immunogen	Acute monocytic leukemia cells and normal blood monocytes
Conjugation	FITC
Alternate Names	C3b/C4b receptor; C4BR; CD antigen CD35; KN; CD35; C3BR; Complement receptor type 1

Application Instructions

Application table	Application	Dilution
	ELISA	Assay-dependent
	FACS	10 µl/10 ⁶ cells
	IHC-Fr	Assay-dependent
	IHC-P	Assay-dependent
	WB	Assay-dependent
Application Note	* The dilutions indicate recommended starting dilutions and the optimal dilutions or concentrations should be determined by the scientist.	

Properties

Form	Liquid
Buffer	PBS and 0.1% Sodium azide.
Preservative	0.1% Sodium azide
Storage instruction	Aliquot and store in the dark at 2-8°C. Keep protected from prolonged exposure to light. Avoid repeated freeze/thaw cycles. Suggest spin the vial prior to opening. The antibody solution should be gently mixed before use.
Note	For laboratory research only, not for drug, diagnostic or other use.

Bioinformation

Database links

[GeneID: 1378 Human](#)

[Swiss-port # P17927 Human](#)

Gene Symbol

CR1

Gene Full Name

complement component (3b/4b) receptor 1 (Knops blood group)

Background

CD35 (complement receptor 1, CR1) is a monomeric multiple modular cell surface glycoprotein which serves as receptor for C3b and C4b, the most important components of the complement system leading to clearance of foreign macromolecules. It is expressed mainly on the surface of granulocytes, monocytes, erythrocytes, B cells and follicular dendritic cells. Besides its role in complement cascade, CD35 is involved in blocking BCR-induced proliferation and the differentiation of B cells to plasmablasts and their Ig production.

Function

Mediates cellular binding of particles and immune complexes that have activated complement. [UniProt]

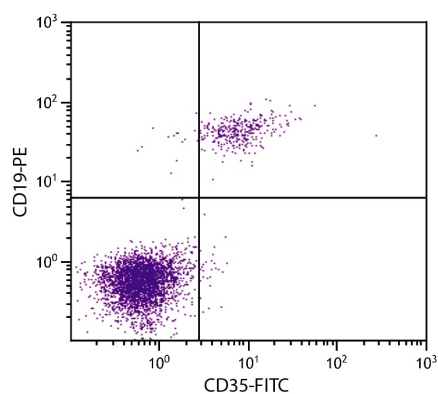
Research Area

Developmental Biology antibody; Immune System antibody

Calculated Mw

224 kDa

Images



ARG65438 anti-CD35 / CR1 antibody [E11] (FITC) FACS image

Flow Cytometry: Human peripheral blood lymphocytes stained with ARG65438 anti-CD35 / CR1 antibody [E11] (FITC) and ARG21260 anti-CD19 antibody [SJ25-C1] (PE).