

## ARG65416 anti-Human IgE antibody [BE5]

Package: 100 µg  
Store at: -20°C

### Summary

Product Description	Mouse Monoclonal antibody [BE5] recognizes Human IgE
Tested Reactivity	Hu
Tested Application	ELISA, FACS
Specificity	The clone BE5 reacts with human IgE; it recognizes an epitope different from the ones recognized by 4G7 and 4H10 antibodies to IgE.
Host	Mouse
Clonality	Monoclonal
Clone	BE5
Isotype	IgG1
Target Name	Human IgE
Species	Human
Immunogen	Purified human IgE.
Conjugation	Un-conjugated

### Application Instructions

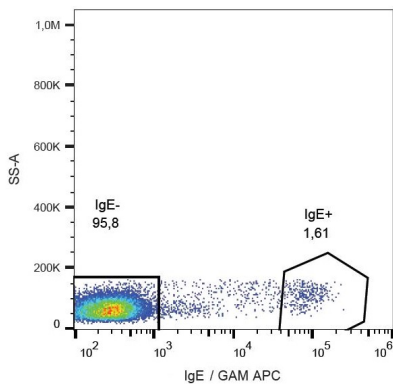
Application table	Application	Dilution
	ELISA	Assay-dependent
	FACS	5 µg/ml
Application Note	* The dilutions indicate recommended starting dilutions and the optimal dilutions or concentrations should be determined by the scientist.	

### Properties

Form	Liquid
Purification	Protein A affinity purified.
Purity	> 95% (by SDS-PAGE)
Buffer	PBS (pH 7.4) and 15 mM Sodium azide
Preservative	15 mM Sodium azide
Concentration	1 mg/ml
Storage instruction	For continuous use, store undiluted antibody at 2-8°C for up to a week. For long-term storage, aliquot and store at -20°C or below. Storage in frost free freezers is not recommended. Avoid repeated freeze/thaw cycles. Suggest spin the vial prior to opening. The antibody solution should be gently mixed before use.

Note	For laboratory research only, not for drug, diagnostic or other use.
<b>Bioinformation</b>	
Database links	<a href="#">GeneID: 3497 Human</a>
Background	Immunoglobulin E (IgE) is a 180 kDa soluble protein serving as an antigen-specific unit of mast cell effector mechanisms. IgE has the lowest serum concentration of all immunoglobulins (approximately 0.5 mg/l) in healthy individuals, but upon allergen challenge its concentration in blood increases dramatically. Although biological survival of free IgE is very short (T1/2 = 2 days), it is stabilized after binding to its high affinity receptor. Unlike IgM- IgG- and IgA-committed B cells, IgE-switched B cells do not undergo clonal expansion.
Research Area	Immune System antibody

Images



ARG65416 anti-Human IgE antibody [BE5] FACS image

Flow Cytometry: Human peripheral blood lymphocytes stained with ARG65416 anti-Human IgE antibody [BE5], followed by incubation with APC labeled Goat anti-Mouse secondary antibody.