

## ARG65240 anti-IL12RB1 antibody

Package: 100 µg  
Store at: -20°C

### Summary

Product Description	Goat Polyclonal antibody recognizes IL12RB1
Tested Reactivity	Hu
Tested Application	WB
Specificity	This antibody is expected to recognize isoform 1 (NP_005526.1) only.
Host	Goat
Clonality	Polyclonal
Isotype	IgG
Target Name	IL12RB1
Species	Human
Immunogen	C-HVSVKNHSLDSVS
Conjugation	Un-conjugated
Alternate Names	Interleukin-12 receptor subunit beta-1; IL-12R-beta-1; IL12RB; IL-12R-BETA1; IL-12 receptor beta component; IL-12RB1; IL-12 receptor subunit beta-1; IMD30; CD212; IL-12R subunit beta-1; CD antigen CD212

### Application Instructions

Application table	Application	Dilution
	WB	0.3 - 1 µg/ml
Application Note	WB: Recommend incubate at RT for 1h. * The dilutions indicate recommended starting dilutions and the optimal dilutions or concentrations should be determined by the scientist.	

### Properties

Form	Liquid
Purification	Purified from goat serum by antigen affinity chromatography.
Buffer	Tris saline (pH 7.3), 0.02% Sodium azide and 0.5% BSA.
Preservative	0.02% Sodium azide
Stabilizer	0.5% BSA
Concentration	0.5 mg/ml
Storage instruction	For continuous use, store undiluted antibody at 2-8°C for up to a week. For long-term storage, aliquot and store at -20°C or below. Storage in frost free freezers is not recommended. Avoid repeated freeze/thaw cycles. Suggest spin the vial prior to opening. The antibody solution should be gently mixed before use.

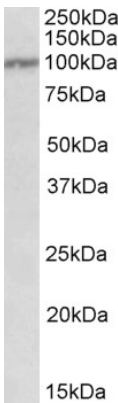
Note

For laboratory research only, not for drug, diagnostic or other use.

Bioinformation

Database links	<a href="#">GeneID: 3594 Human</a>  <a href="#">Swiss-port # P42701 Human</a>
Background	The protein encoded by this gene is a type I transmembrane protein that belongs to the hemopoietin receptor superfamily. This protein binds to interleukine 12 (IL12) with a low affinity, and is thought to be a part of IL12 receptor complex. This protein forms a disulfide-linked oligomer, which is required for its IL12 binding activity. The coexpression of this and IL12RB2 proteins was shown to lead to the formation of high-affinity IL12 binding sites and reconstitution of IL12 dependent signaling. The lack of expression of this gene was found to result in the immunodeficiency of patients with severe mycobacterial and Salmonella infections. Two alternatively spliced transcript variants of this gene encoding distinct isoforms have been reported. [provided by RefSeq, Jul 2008]
Research Area	Immune System antibody
Calculated Mw	73 kDa

Images



ARG65240 anti-IL12RB1 antibody WB image

Western Blot: Peripharal Blood Lymphocytes lysate (35 µg protein in RIPA buffer) stained with ARG65240 anti-IL12RB1 antibody at 0.3 µg/ml dilution.