

ARG65224 anti-ANTXR2 / CMG2 antibody

Package: 100 µg
Store at: -20°C

Summary

Product Description	Goat Polyclonal antibody recognizes ANTXR2 / CMG2
Tested Reactivity	Hu
Predict Reactivity	Ms, Rat, Cow, Dog
Tested Application	IHC-P
Specificity	This antibody is expected to recognize both reported isoforms (NP_477520.2; NP_001139266.1).
Host	Goat
Clonality	Polyclonal
Isotype	IgG
Target Name	ANTXR2 / CMG2
Species	Human
Immunogen	C-HEGLKLANEQIKK
Conjugation	Un-conjugated
Alternate Names	JHF; HFS; CMG-2; ISH; Capillary morphogenesis gene 2 protein; CMG2; Anthrax toxin receptor 2

Application Instructions

Application table	Application	Dilution
	IHC-P	2.5 µg/ml
Application Note	IHC-P: Antigen Retrieval: Steam tissue section in Citrate buffer (pH 6.0). * The dilutions indicate recommended starting dilutions and the optimal dilutions or concentrations should be determined by the scientist.	

Properties

Form	Liquid
Purification	Purified from goat serum by antigen affinity chromatography.
Buffer	Tris saline (pH 7.3), 0.02% Sodium azide and 0.5% BSA.
Preservative	0.02% Sodium azide
Stabilizer	0.5% BSA
Concentration	0.5 mg/ml
Storage instruction	For continuous use, store undiluted antibody at 2-8°C for up to a week. For long-term storage, aliquot and store at -20°C or below. Storage in frost free freezers is not recommended. Avoid repeated freeze/thaw cycles. Suggest spin the vial prior to opening. The antibody solution should be gently mixed before use.

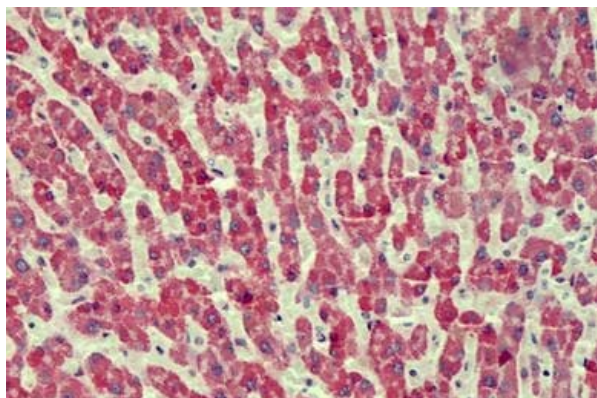
Note

For laboratory research only, not for drug, diagnostic or other use.

Bioinformation

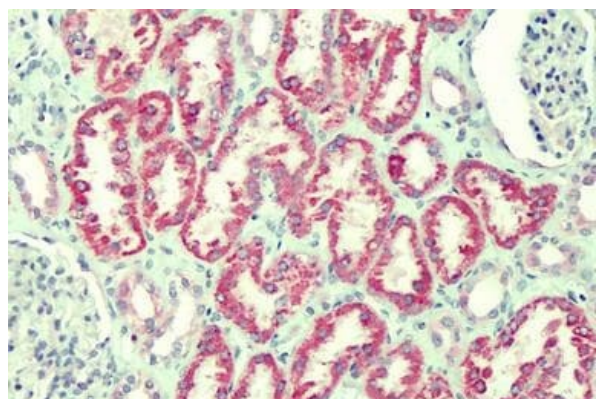
Database links	GeneID: 118429 Human Swiss-port # P58335 Human
Background	This gene encodes a receptor for anthrax toxin. The protein binds to collagen IV and laminin, suggesting that it may be involved in extracellular matrix adhesion. Mutations in this gene cause juvenile hyaline fibromatosis and infantile systemic hyalinosis. Multiple transcript variants encoding different isoforms have been found for this gene. [provided by RefSeq, Mar 2009]
Research Area	Neuroscience antibody; Signaling Transduction antibody
Calculated Mw	54 kDa

Images



ARG65224 anti-ANTXR2 / CMG2 antibody IHC-P image

Immunohistochemistry: Paraffin-embedded Human liver tissue. Antigen Retrieval: Steam tissue section in Citrate buffer (pH 6.0). The tissue section was stained with ARG65224 anti-ANTXR2 / CMG2 antibody at 2.5 µg/ml dilution followed by AP-staining.



ARG65224 anti-ANTXR2 / CMG2 antibody IHC-P image

Immunohistochemistry: Paraffin-embedded Human kidney tissue. Antigen Retrieval: Steam tissue section in Citrate buffer (pH 6.0). The tissue section was stained with ARG65224 anti-ANTXR2 / CMG2 antibody at 2.5 µg/ml dilution followed by AP-staining.