

ARG65190 anti-CLCN2 antibody

Package: 100 µg
Store at: -20°C

Summary

Product Description	Goat Polyclonal antibody recognizes CLCN2
Tested Reactivity	Hu
Predict Reactivity	Ms, Rat, Cow, Dog
Tested Application	WB
Specificity	This antibody is expected to recognize all reported isoforms (NP_004357.3; NP_001164558.1; NP_001164559.1; NP_001164560.1).
Host	Goat
Clonality	Polyclonal
Isotype	IgG
Target Name	CLCN2
Species	Human
Immunogen	QQLDEPVNFSDCK
Conjugation	Un-conjugated
Alternate Names	EG13; Chloride channel protein 2; CIC-2; cIC-2; EGI11; CLC2; LKPAT; EJM6; ECA3; ECA2; EGMA; CIC-2; EJM8

Application Instructions

Application table	Application	Dilution
	WB	0.3 - 1 µg/ml
Application Note	WB: Recommend incubate at RT for 1h. * The dilutions indicate recommended starting dilutions and the optimal dilutions or concentrations should be determined by the scientist.	

Properties

Form	Liquid
Purification	Purified from goat serum by antigen affinity chromatography.
Buffer	Tris saline (pH 7.3), 0.02% Sodium azide and 0.5% BSA.
Preservative	0.02% Sodium azide
Stabilizer	0.5% BSA
Concentration	0.5 mg/ml
Storage instruction	For continuous use, store undiluted antibody at 2-8°C for up to a week. For long-term storage, aliquot and store at -20°C or below. Storage in frost free freezers is not recommended. Avoid repeated freeze/thaw cycles. Suggest spin the vial prior to opening. The antibody solution should be gently mixed

before use.

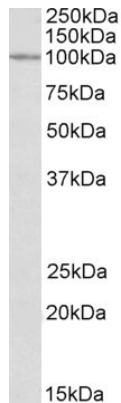
Note

For laboratory research only, not for drug, diagnostic or other use.

Bioinformation

Database links	GeneID: 1181 Human Swiss-port # P51788 Human
Background	This gene encodes a voltage-gated chloride channel. The encoded protein is a transmembrane protein that maintains chloride ion homeostasis in various cells. Defects in this gene may be a cause of certain epilepsies. Four transcript variants encoding different isoforms have been found for this gene. [provided by RefSeq, Mar 2012]
Research Area	Neuroscience antibody; Signaling Transduction antibody
Calculated Mw	99 kDa
PTM	Phosphorylated. Activated by dephosphorylation.

Images



ARG65190 anti-CLCN2 antibody WB image

Western Blot: HeLa lysate (35 µg protein in RIPA buffer) stained with ARG65190 anti-CLCN2 antibody at 0.3 µg/ml dilution.