

## ARG65177 anti-LSP1 antibody

Package: 100 µg  
Store at: -20°C

### Summary

Product Description	Goat Polyclonal antibody recognizes LSP1
Tested Reactivity	Hu, Ms
Predict Reactivity	Cow, Rat, Dog
Tested Application	IHC-P, WB
Specificity	This antibody is expected to recognize both reported isoforms (NP_002330.1; NP_001013271.1). Reported variants represent identical protein: NP_001013273.1, NP_001013271.1, NP_001013272.1
Host	Goat
Clonality	Polyclonal
Isotype	IgG
Target Name	LSP1
Species	Human
Immunogen	C-RYKFVATGHGKYEKV
Conjugation	Un-conjugated
Alternate Names	Lymphocyte-specific protein 1; pp52; 52 kDa phosphoprotein; 47 kDa actin-binding protein; WP34; Lymphocyte-specific antigen WP34

### Application Instructions

Application table	Application	Dilution
	IHC-P	3 - 5 µg/ml
	WB	0.01 - 0.1 µg/ml
Application Note	WB: Recommend incubate at RT for 1h. IHC-P: Antigen Retrieval: Steam tissue section in Citrate buffer (pH 6.0). * The dilutions indicate recommended starting dilutions and the optimal dilutions or concentrations should be determined by the scientist.	

### Properties

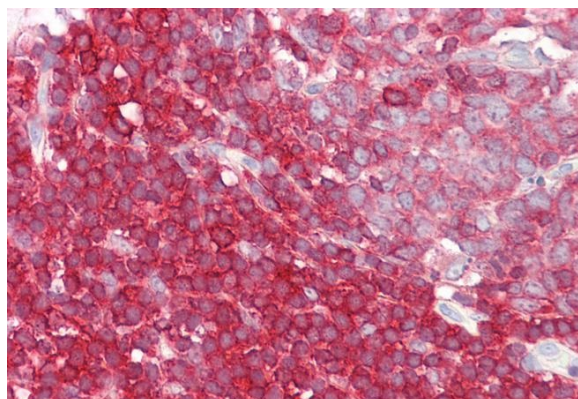
Form	Liquid
Purification	Purified from goat serum by antigen affinity chromatography.
Buffer	Tris saline (pH 7.3), 0.02% Sodium azide and 0.5% BSA.
Preservative	0.02% Sodium azide
Stabilizer	0.5% BSA
Concentration	0.5 mg/ml

Storage instruction	For continuous use, store undiluted antibody at 2-8°C for up to a week. For long-term storage, aliquot and store at -20°C or below. Storage in frost free freezers is not recommended. Avoid repeated freeze/thaw cycles. Suggest spin the vial prior to opening. The antibody solution should be gently mixed before use.
Note	For laboratory research only, not for drug, diagnostic or other use.

## Bioinformation

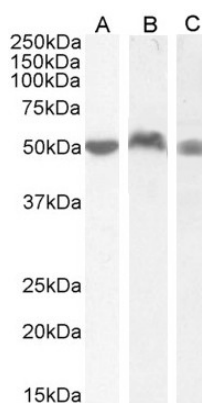
Database links	<a href="#">GeneID: 16985 Mouse</a> <a href="#">GeneID: 4046 Human</a> <a href="#">Swiss-port # P19973 Mouse</a> <a href="#">Swiss-port # P33241 Human</a>
Background	This gene encodes an intracellular F-actin binding protein. The protein is expressed in lymphocytes, neutrophils, macrophages, and endothelium and may regulate neutrophil motility, adhesion to fibrinogen matrix proteins, and transendothelial migration. Alternative splicing results in multiple transcript variants encoding different isoforms. [provided by RefSeq, Jul 2008]
Research Area	Immune System antibody; Signaling Transduction antibody
Calculated Mw	37 kDa
PTM	Phosphorylated by casein kinase II, protein kinase C and MAPKAPK2. Phosphorylation by PKC induces translocation from membrane to cytoplasm. Phosphorylation by MAPKAPK2 may regulate neutrophil chemotaxis (By similarity).

## Images



ARG65177 anti-LSP1 antibody IHC-P image

Immunohistochemistry: Paraffin-embedded Human colon tissue. Antigen Retrieval: Steam tissue section in Citrate buffer (pH 6.0). The tissue section was stained with ARG65177 anti-LSP1 antibody at 3.75 µg/ml dilution followed by AP-staining.



ARG65177 anti-LSP1 antibody WB image

Western blot: 35 µg of Human peripheral blood mononuclear cells (A), lymph node (B) and tonsil (C) lysates (in RIPA buffer) stained with ARG65177 anti-LSP1 antibody at 0.05 µg/ml (A), 0.03 µg/ml (B, C) dilutions and incubated at RT for 1 hour.



#### ARG65177 anti-LSP1 antibody WB image

Western blot: 35 µg of Daudi cell lysate (in RIPA buffer) stained with ARG65177 anti-LSP1 antibody at 0.03 µg/ml dilution and incubated at RT for 1 hour.



#### ARG65177 anti-LSP1 antibody WB image

Western blot: 35 µg of Mouse spleen lysate (in RIPA buffer) stained with ARG65177 anti-LSP1 antibody at 0.01 µg/ml dilution and incubated at RT for 1 hour.