

ARG65162 anti-TOMM40 antibody

Package: 100 µg
Store at: -20°C

Summary

Product Description	Goat Polyclonal antibody recognizes TOMM40
Tested Reactivity	Hu
Predict Reactivity	Ms, Rat, Cow, Dog
Tested Application	WB
Specificity	Reported variants represent identical protein: NP_001122389.1, NP_001122388.1, NP_006105.1.
Host	Goat
Clonality	Polyclonal
Isotype	IgG
Target Name	TOMM40
Species	Human
Immunogen	C-HTVALSTIGESNYH
Conjugation	Un-conjugated
Alternate Names	PER-EC1; p38.5; C19orf1; TOM40; Mitochondrial import receptor subunit TOM40 homolog; D19S1177E; PEREC1; Protein Haymaker; Translocase of outer membrane 40 kDa subunit homolog

Application Instructions

Application table	Application	Dilution
	WB	1 - 3 µg/ml
Application Note	WB: Recommend incubate at RT for 1h. * The dilutions indicate recommended starting dilutions and the optimal dilutions or concentrations should be determined by the scientist.	

Properties

Form	Liquid
Purification	Purified from goat serum by antigen affinity chromatography.
Buffer	Tris saline (pH 7.3), 0.02% Sodium azide and 0.5% BSA.
Preservative	0.02% Sodium azide
Stabilizer	0.5% BSA
Concentration	0.5 mg/ml
Storage instruction	For continuous use, store undiluted antibody at 2-8°C for up to a week. For long-term storage, aliquot and store at -20°C or below. Storage in frost free freezers is not recommended. Avoid repeated freeze/thaw cycles. Suggest spin the vial prior to opening. The antibody solution should be gently mixed before use.

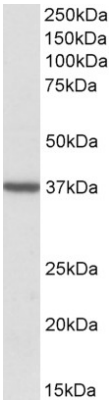
Note

For laboratory research only, not for drug, diagnostic or other use.

Bioinformation

Database links	GeneID: 10452 Human Swiss-port # O96008 Human
Background	TOMM40 is the channel-forming subunit of the translocase of the mitochondrial outer membrane (TOM) complex that is essential for protein import into mitochondria (Humphries et al., 2005 [PubMed 15644312]).[supplied by OMIM, May 2008]
Research Area	Controls and Markers antibody; Metabolism antibody; Signaling Transduction antibody
Calculated Mw	38 kDa

Images



ARG65162 anti-TOMM40 antibody WB image

Western Blot: Human Frontal Cortex lysate (35 µg protein in RIPA buffer) stained with ARG65162 anti-TOMM40 antibody at 2 µg/ml dilution.