

ARG65156 anti-MICS1 / GHITM antibody

Package: 100 µg
Store at: -20°C

Summary

| | |
|---------------------|--|
| Product Description | Goat Polyclonal antibody recognizes MICS1 / GHITM |
| Tested Reactivity | Hu |
| Predict Reactivity | Cow, Rat, Dog |
| Tested Application | WB |
| Host | Goat |
| Clonality | Polyclonal |
| Isotype | IgG |
| Target Name | MICS1 / GHITM |
| Species | Human |
| Immunogen | C-PQYVKDRIHST |
| Conjugation | Un-conjugated |
| Alternate Names | Dermal papilla-derived protein 2; MICS1; PTD010; HSPC282; My021; Transmembrane BAX inhibitor motif-containing protein 5; DERP2; TMBIM5; Growth hormone-inducible transmembrane protein; Mitochondrial morphology and cristae structure 1 |

Application Instructions

| Application table | Application | Dilution |
|-------------------|--|-------------|
| | WB | 1 - 3 µg/ml |
| Application Note | WB: Recommend incubate at RT for 1h. * The dilutions indicate recommended starting dilutions and the optimal dilutions or concentrations should be determined by the scientist. | |

Properties

| | |
|---------------------|--|
| Form | Liquid |
| Purification | Purified from goat serum by antigen affinity chromatography. |
| Buffer | Tris saline (pH 7.3), 0.02% Sodium azide and 0.5% BSA. |
| Preservative | 0.02% Sodium azide |
| Stabilizer | 0.5% BSA |
| Concentration | 0.5 mg/ml |
| Storage instruction | For continuous use, store undiluted antibody at 2-8°C for up to a week. For long-term storage, aliquot and store at -20°C or below. Storage in frost free freezers is not recommended. Avoid repeated freeze/thaw cycles. Suggest spin the vial prior to opening. The antibody solution should be gently mixed before use. |

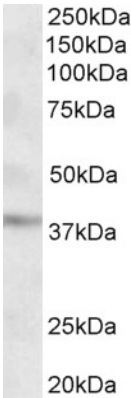
Note

For laboratory research only, not for drug, diagnostic or other use.

Bioinformation

| | |
|----------------|---|
| Database links | GeneID: 27069 Human Swiss-port # Q9H3K2 Human |
| Gene Symbol | GHITM |
| Gene Full Name | growth hormone inducible transmembrane protein |
| Function | Required for the mitochondrial tubular network and cristae organization. Involved in apoptotic release of cytochrome c. [UniProt] |
| Research Area | Cell Biology and Cellular Response antibody; Cell Death antibody; Controls and Markers antibody; Metabolism antibody |
| Calculated Mw | 37 kDa |

Images



ARG65156 anti-MICS1 / GHITM antibody WB image

Western Blot: Human Cerebral Cortex lysate (35 µg protein in RIPA buffer) stained with ARG65156 anti-MICS1 / GHITM (aa117-127) antibody at 2 µg/ml dilution.