

## ARG65139 anti-MICS1 / GHITM antibody

Package: 100 µg  
Store at: -20°C

### Summary

Product Description	Goat Polyclonal antibody recognizes MICS1 / GHITM
Tested Reactivity	Hu
Predict Reactivity	Ms, Rat, Cow, Dog, Pig
Tested Application	WB
Host	Goat
Clonality	Polyclonal
Isotype	IgG
Target Name	MICS1 / GHITM
Species	Human
Immunogen	C-PSREYATKTRIGIR
Conjugation	Un-conjugated
Alternate Names	Dermal papilla-derived protein 2; MICS1; PTD010; HSPC282; My021; Transmembrane BAX inhibitor motif-containing protein 5; DERP2; TMBIM5; Growth hormone-inducible transmembrane protein; Mitochondrial morphology and cristae structure 1

### Application Instructions

Application table	Application	Dilution
	WB	0.01 - 0.1 µg/ml
Application Note	WB: Recommend incubate at RT for 1h. * The dilutions indicate recommended starting dilutions and the optimal dilutions or concentrations should be determined by the scientist.	

### Properties

Form	Liquid
Purification	Purified from goat serum by antigen affinity chromatography.
Buffer	Tris saline (pH 7.3), 0.02% Sodium azide and 0.5% BSA.
Preservative	0.02% Sodium azide
Stabilizer	0.5% BSA
Concentration	0.5 mg/ml
Storage instruction	For continuous use, store undiluted antibody at 2-8°C for up to a week. For long-term storage, aliquot and store at -20°C or below. Storage in frost free freezers is not recommended. Avoid repeated freeze/thaw cycles. Suggest spin the vial prior to opening. The antibody solution should be gently mixed before use.

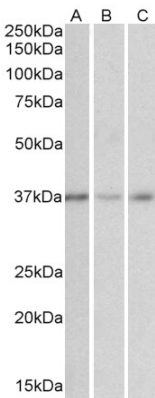
Note

For laboratory research only, not for drug, diagnostic or other use.

Bioinformation

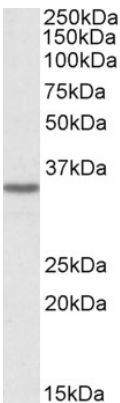
Database links	<a href="#">GeneID: 27069 Human</a> <a href="#">Swiss-port # Q9H3K2 Human</a>
Gene Symbol	GHITM
Gene Full Name	growth hormone inducible transmembrane protein
Function	Required for the mitochondrial tubular network and cristae organization. Involved in apoptotic release of cytochrome c. [UniProt]
Research Area	Cell Biology and Cellular Response antibody; Cell Death antibody; Controls and Markers antibody; Metabolism antibody
Calculated Mw	37 kDa

Images



ARG65139 anti-MICS1 / GHITM antibody WB image

Western Blot: Human Cerebellum (A), Duodenum (B) and Heart (C) cell lysates (35 µg protein in RIPA buffer) stained with ARG65139 anti-MICS1 / GHITM antibody at 0.01 µg/ml dilution.



ARG65139 anti-MICS1 / GHITM antibody WB image

Western Blot: HeLa cell lysate (35 µg protein in RIPA buffer) stained with ARG65139 anti-MICS1 / GHITM antibody at 0.3 µg/ml dilution.