

ARG65101 anti-PLA2R1 antibody

Package: 100 µg
Store at: -20°C

Summary

Product Description	Goat Polyclonal antibody recognizes PLA2R1
Tested Reactivity	Hu
Predict Reactivity	Dog, Pig
Tested Application	FACS
Specificity	This antibody is expected to recognize all reported isoforms (NP_031392.3; NP_001007268.1; NP_001182570.1).
Host	Goat
Clonality	Polyclonal
Isotype	IgG
Target Name	PLA2R1
Species	Human
Immunogen	C-EKKKDTPKQHGT
Conjugation	Un-conjugated
Alternate Names	M-type receptor; Soluble PLA2-R; 180 kDa secretory phospholipase A2 receptor; Soluble PLA2R; PLA2G1R; CLEC13C; PLA2-R; C-type lectin domain family 13 member C; PLA2R; Secretory phospholipase A2 receptor; PLA2IR

Application Instructions

Application table	Application	Dilution
	FACS	10 µg/ml
Application Note	* The dilutions indicate recommended starting dilutions and the optimal dilutions or concentrations should be determined by the scientist.	

Properties

Form	Liquid
Purification	Purified from goat serum by antigen affinity chromatography.
Buffer	Tris saline (pH 7.3), 0.02% Sodium azide and 0.5% BSA.
Preservative	0.02% Sodium azide
Stabilizer	0.5% BSA
Concentration	0.5 mg/ml
Storage instruction	For continuous use, store undiluted antibody at 2-8°C for up to a week. For long-term storage, aliquot and store at -20°C or below. Storage in frost free freezers is not recommended. Avoid repeated freeze/thaw cycles. Suggest spin the vial prior to opening. The antibody solution should be gently mixed

before use.

Note

For laboratory research only, not for drug, diagnostic or other use.

Bioinformation

Database links

[GeneID: 22925 Human](#)

[Swiss-port # Q13018 Human](#)

Background

This gene represents a phospholipase A2 receptor. The encoded protein likely exists as both a transmembrane form and a soluble form. The transmembrane receptor may play a role in clearance of phospholipase A2, thereby inhibiting its action. Polymorphisms at this locus have been associated with susceptibility to idiopathic membranous nephropathy. Alternatively spliced transcript variants encoding different isoforms have been identified.[provided by RefSeq, Sep 2010]

Research Area

Cell Biology and Cellular Response antibody; Metabolism antibody; Signaling Transduction antibody

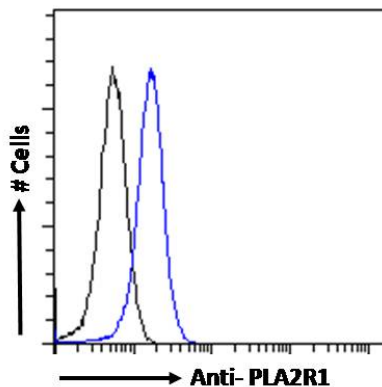
Calculated Mw

169 kDa

PTM

The secretory phospholipase A2 receptor form may be produced by the action of metalloproteinases. It contains all extracellular domains and only lacks transmembrane and cytosolic regions. It is however unclear whether this form is produced by proteolytic cleavage as suggested by some experiments, or by alternative splicing, as in the case of isoform 2 that shares all characteristics of secretory phospholipase A2 receptor form (By similarity).

Images



ARG65101 anti-PLA2R1 antibody FACS image

Flow Cytometry: Paraformaldehyde-fixed HEK293 cells permeabilized with 0.5% Triton. Cells were stained with ARG65101 anti-PLA2R1 antibody (blue line) at 10 µg/ml dilution for 1 hour, followed by incubation with Alexa Fluor 488 labelled secondary antibody. IgG control: Unimmunized goat IgG (black line).