

ARG65055 anti-CCL20 / MIP3 alpha antibody

Package: 100 µg
Store at: -20°C

Summary

Product Description	Goat Polyclonal antibody recognizes CCL20 / MIP3 alpha
Tested Reactivity	Hu
Predict Reactivity	Cow, Pig
Tested Application	IHC-P
Specificity	This antibody is expected to recognize both isoforms (NP_004582.1; NP_001123518.1).
Host	Goat
Clonality	Polyclonal
Isotype	IgG
Target Name	CCL20 / MIP3 alpha
Species	Human
Immunogen	CLGYTDRILHPK
Conjugation	Un-conjugated
Alternate Names	ST38; CC chemokine LARC; Exodus; Macrophage inflammatory protein 3 alpha; 2-70; MIP-3a; Beta-chemokine exodus-1; SCYA20; MIP-3-alpha; LARC; MIP3A; 1-64; Small-inducible cytokine A20; 1-67; Ckb4; C-C motif chemokine 20; Liver and activation-regulated chemokine

Application Instructions

Application table	<table> <tr> <th>Application</th><th>Dilution</th></tr> <tr> <td>IHC-P</td><td>6 - 8 µg/ml</td></tr> </table>	Application	Dilution	IHC-P	6 - 8 µg/ml
Application	Dilution				
IHC-P	6 - 8 µg/ml				
Application Note	<p>IHC-P: Antigen Retrieval: Steam tissue section in Citrate buffer (pH 6.0).</p> <p>* The dilutions indicate recommended starting dilutions and the optimal dilutions or concentrations should be determined by the scientist.</p>				

Properties

Form	Liquid
Purification	Purified from goat serum by antigen affinity chromatography.
Buffer	Tris saline (pH 7.3), 0.02% Sodium azide and 0.5% BSA.
Preservative	0.02% Sodium azide
Stabilizer	0.5% BSA
Concentration	0.5 mg/ml
Storage instruction	For continuous use, store undiluted antibody at 2-8°C for up to a week. For long-term storage, aliquot and store at -20°C or below. Storage in frost free freezers is not recommended. Avoid repeated freeze/thaw cycles. Suggest spin the vial prior to opening. The antibody solution should be gently mixed

before use.

Note

For laboratory research only, not for drug, diagnostic or other use.

Bioinformation

Database links

[GeneID: 6364 Human](#)

[Swiss-port # P78556 Human](#)

Background

This antimicrobial gene belongs to the subfamily of small cytokine CC genes. Cytokines are a family of secreted proteins involved in immunoregulatory and inflammatory processes. The CC cytokines are proteins characterized by two adjacent cysteines. The protein encoded by this gene displays chemotactic activity for lymphocytes and can repress proliferation of myeloid progenitors. Two transcript variants encoding different isoforms have been found for this gene. [provided by RefSeq, Sep 2014]

Research Area

Immune System antibody

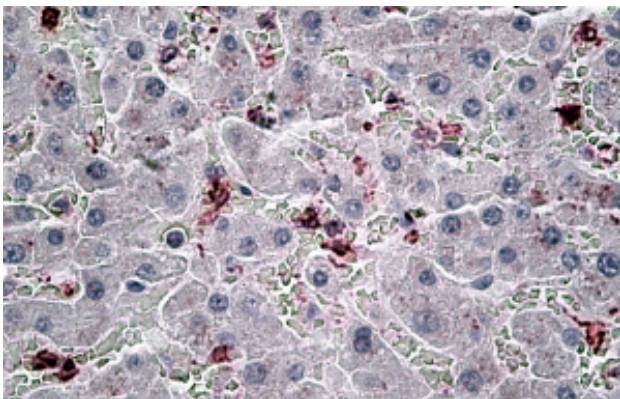
Calculated Mw

11 kDa

PTM

C-terminal processed forms which lack 1, 3 or 6 amino acids are produced by proteolytic cleavage after secretion from peripheral blood monocytes.

Images



ARG65055 anti-CCL20 / MIP3 alpha antibody IHC-P image

Immunohistochemistry: Paraffin embedded Human Liver. (Steamed antigen retrieval with citrate buffer pH 6) stained with ARG65055 anti-CCL20 / MIP3 alpha antibody at 6 µg/ml dilution followed by AP-staining.