

ARG65017 anti-Klk6 / neurosin antibody

Package: 100 µg
Store at: -20°C

Summary

Product Description	Goat Polyclonal antibody recognizes Klk6 / neurosin
Tested Reactivity	Ms
Predict Reactivity	Cow, Rat
Tested Application	WB
Host	Goat
Clonality	Polyclonal
Isotype	IgG
Target Name	Klk6 / neurosin
Species	Mouse
Immunogen	KEKPGVYTDVCTHIR
Conjugation	Un-conjugated
Alternate Names	PRSS18; Serine protease 9; Kallikrein-6; Klk7; hK6; Neurosin; Bssp; Protease M; EC 3.4.21.-; SP59; PRSS9; Zyme; Serine protease 18

Application Instructions

Application table	Application	Dilution
	WB	1 - 3 µg/ml
Application Note	WB: Recommend incubate at RT for 1h. * The dilutions indicate recommended starting dilutions and the optimal dilutions or concentrations should be determined by the scientist.	

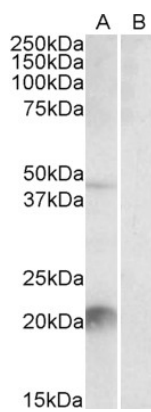
Properties

Form	Liquid
Purification	Purified from goat serum by antigen affinity chromatography.
Buffer	Tris saline (pH 7.3), 0.02% Sodium azide and 0.5% BSA.
Preservative	0.02% Sodium azide
Stabilizer	0.5% BSA
Concentration	0.5 mg/ml
Storage instruction	For continuous use, store undiluted antibody at 2-8°C for up to a week. For long-term storage, aliquot and store at -20°C or below. Storage in frost free freezers is not recommended. Avoid repeated freeze/thaw cycles. Suggest spin the vial prior to opening. The antibody solution should be gently mixed before use.
Note	For laboratory research only, not for drug, diagnostic or other use.

Bioinformation

Gene Symbol	Klk6
Gene Full Name	kallikrein related-peptidase 6
Background	Kallikreins are a subgroup of serine proteases having diverse physiological functions. Growing evidence suggests that many kallikreins are implicated in carcinogenesis and some have potential as novel cancer and other disease biomarkers. This gene is one of the fifteen kallikrein subfamily members located in a cluster on chromosome 19. The encoded enzyme is regulated by steroid hormones. In tissue culture, the enzyme has been found to generate amyloidogenic fragments from the amyloid precursor protein, suggesting a potential for involvement in Alzheimer's disease. Multiple alternatively spliced transcript variants that encode different isoforms have been identified for this gene. [provided by RefSeq, Jul 2008]
Research Area	Cancer antibody; Cell Biology and Cellular Response antibody; Controls and Markers antibody; Neuroscience antibody; Signaling Transduction antibody
Calculated Mw	27 kDa
PTM	Inactivated by autolytic cleavage after Arg-80.

Images



ARG65017 anti-Klk6 / neurosin antibody WB image

Western Blot: Mouse Liver lysate (35 µg protein in RIPA buffer) with (B) and without (A) blocking with the immunising peptide. stained with ARG65017 anti-Klk6 / neurosin antibody at 2 µg/ml dilution.