

ARG65010 anti-NUDC antibody

Package: 100 µg
Store at: -20°C

Summary

Product Description	Goat Polyclonal antibody recognizes NUDC
Tested Reactivity	Hu
Predict Reactivity	Ms, Rat, Cow, Dog
Tested Application	WB
Host	Goat
Clonality	Polyclonal
Isotype	IgG
Target Name	NUDC
Species	Human
Immunogen	C-PNLGNGADLPNYR
Conjugation	Un-conjugated
Alternate Names	Nuclear distribution protein C homolog; Nuclear migration protein nudC; MNUDC; HNUDC; NPD011

Application Instructions

Application table	Application	Dilution
	WB	0.3 - 1 µg/ml
Application Note	WB: Recommend incubate at RT for 1h. * The dilutions indicate recommended starting dilutions and the optimal dilutions or concentrations should be determined by the scientist.	

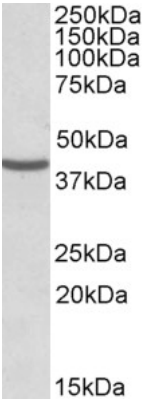
Properties

Form	Liquid
Purification	Purified from goat serum by antigen affinity chromatography.
Buffer	Tris saline (pH 7.3), 0.02% Sodium azide and 0.5% BSA.
Preservative	0.02% Sodium azide
Stabilizer	0.5% BSA
Concentration	0.5 mg/ml
Storage instruction	For continuous use, store undiluted antibody at 2-8°C for up to a week. For long-term storage, aliquot and store at -20°C or below. Storage in frost free freezers is not recommended. Avoid repeated freeze/thaw cycles. Suggest spin the vial prior to opening. The antibody solution should be gently mixed before use.
Note	For laboratory research only, not for drug, diagnostic or other use.

Bioinformation

Database links	GeneID: 10726 Human Swiss-port # Q9Y266 Human
Background	This gene encodes a nuclear distribution protein that plays an essential role in mitosis and cytokinesis. The encoded protein is involved in spindle formation during mitosis and in microtubule organization during cytokinesis. Pseudogenes of this gene are found on chromosome 2. [provided by RefSeq, Feb 2012]
Research Area	Cell Biology and Cellular Response antibody; Neuroscience antibody
Calculated Mw	38 kDa
PTM	Reversibly phosphorylated on serine residues during the M phase of the cell cycle. Phosphorylation on Ser-274 and Ser-326 is necessary for correct formation of mitotic spindles and chromosome separation during mitosis. Phosphorylated by PLK and other kinases.

Images



ARG65010 anti-NUDC antibody WB image

Western Blot: HeLa lysate (35 µg protein in RIPA buffer) stained with ARG65010 anti-NUDC antibody at 0.3 µg/ml dilution.