

## ARG64976 anti-TREML1 antibody

Package: 100 µg  
Store at: -20°C

### Summary

Product Description	Goat Polyclonal antibody recognizes TREML1
Tested Reactivity	Hu
Tested Application	WB
Specificity	This antibody may cross-react with mouse TREML1 (GeneID: 71326; MW: 34.28 kDa).
Host	Goat
Clonality	Polyclonal
Isotype	IgG
Target Name	TREML1
Species	Human
Immunogen	CGPAQNPPNNQTPS
Conjugation	Un-conjugated
Alternate Names	GLTL1825; dJ238O23.3; Trem-like transcript 1 protein; TLT-1; TLT1; PRO3438; Triggering receptor expressed on myeloid cells-like protein 1

### Application Instructions

Application table	Application	Dilution
	WB	0.3 - 1 µg/ml
Application Note	WB: Recommend incubate at RT for 1h. * The dilutions indicate recommended starting dilutions and the optimal dilutions or concentrations should be determined by the scientist.	

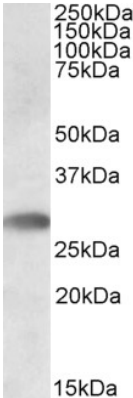
### Properties

Form	Liquid
Purification	Purified from goat serum by antigen affinity chromatography.
Buffer	Tris saline (pH 7.3), 0.02% Sodium azide and 0.5% BSA.
Preservative	0.02% Sodium azide
Stabilizer	0.5% BSA
Concentration	0.5 mg/ml
Storage instruction	For continuous use, store undiluted antibody at 2-8°C for up to a week. For long-term storage, aliquot and store at -20°C or below. Storage in frost free freezers is not recommended. Avoid repeated freeze/thaw cycles. Suggest spin the vial prior to opening. The antibody solution should be gently mixed before use.
Note	For laboratory research only, not for drug, diagnostic or other use.

Bioinformation

Database links	<a href="#">GeneID: 340205 Human</a>  <a href="#">Swiss-port # Q86YW5 Human</a>
Background	TREML1 is located in a gene cluster on chromosome 6 with the single Ig variable (IgV) domain activating receptors TREM1 (MIM 605085) and TREM2 (MIM 605086), but it has distinct structural and functional properties. TREML1 enhances calcium signaling in an SHP2 (PTPN11; MIM 176876)-dependent manner (Allcock et al., 2003 [PubMed 12645956]; Barrow et al., 2004 [PubMed 15128762]).[supplied by OMIM, Mar 2008]
Research Area	Cell Biology and Cellular Response antibody; Immune System antibody; Signaling Transduction antibody
Calculated Mw	33 kDa
PTM	Phosphorylated on tyrosine residues.

Images



ARG64976 anti-TREML1 antibody WB image

Western Blot: Human Bone Marrow lysate (RIPA buffer, 35 µg total protein per lane) stained with ARG64976 anti-TREML1 antibody at 0.5 µg/ml dilution.