

ARG64951 anti-CCT3 / TCP1 antibody

Package: 100 µg
Store at: -20°C

Summary

| | |
|---------------------|---|
| Product Description | Goat Polyclonal antibody recognizes CCT3 / TCP1 |
| Tested Reactivity | Hu, Ms |
| Predict Reactivity | Cow, Rat, Dog, Pig |
| Tested Application | IHC-P, WB |
| Specificity | This antibody is expected to recognize all reported isoforms (NP_005989.3; NP_001008883.1; NP_001008800.1). |
| Host | Goat |
| Clonality | Polyclonal |
| Isotype | IgG |
| Target Name | CCT3 / TCP1 |
| Species | Human |
| Immunogen | C-GHKKKGDDQSRQGG |
| Conjugation | Un-conjugated |
| Alternate Names | CCT-gamma; PIG48; TRIC5; TCP-1-gamma; T-complex protein 1 subunit gamma; CCTG; hTRIC5 |

Application Instructions

| | | |
|-------------------|--|-------------------|
| Application table | Application | Dilution |
| | IHC-P | 5 µg/ml |
| | WB | 0.01 - 0.03 µg/ml |
| Application Note | WB: Recommend incubate at RT for 1h. IHC-P: Antigen Retrieval: Steam tissue section in Citrate buffer (pH 6.0). * The dilutions indicate recommended starting dilutions and the optimal dilutions or concentrations should be determined by the scientist. | |

Properties

| | |
|---------------------|---|
| Form | Liquid |
| Purification | Purified from goat serum by antigen affinity chromatography. |
| Buffer | Tris saline (pH 7.3), 0.02% Sodium azide and 0.5% BSA. |
| Preservative | 0.02% Sodium azide |
| Stabilizer | 0.5% BSA |
| Concentration | 0.5 mg/ml |
| Storage instruction | For continuous use, store undiluted antibody at 2-8°C for up to a week. For long-term storage, aliquot and store at -20°C or below. Storage in frost free freezers is not recommended. Avoid repeated |

freeze/thaw cycles. Suggest spin the vial prior to opening. The antibody solution should be gently mixed before use.

Note

For laboratory research only, not for drug, diagnostic or other use.

Bioinformation

Database links

[GeneID: 12462 Mouse](#)

[GeneID: 7203 Human](#)

[Swiss-port # P49368 Human](#)

[Swiss-port # P80318 Mouse](#)

Background

The protein encoded by this gene is a molecular chaperone that is a member of the chaperonin containing TCP1 complex (CCT), also known as the TCP1 ring complex (TRiC). This complex consists of two identical stacked rings, each containing eight different proteins. Unfolded polypeptides enter the central cavity of the complex and are folded in an ATP-dependent manner. The complex folds various proteins, including actin and tubulin. Alternate transcriptional splice variants have been characterized for this gene. In addition, a pseudogene of this gene has been found on chromosome 8. [provided by RefSeq, Aug 2010]

Research Area

Signaling Transduction antibody

Calculated Mw

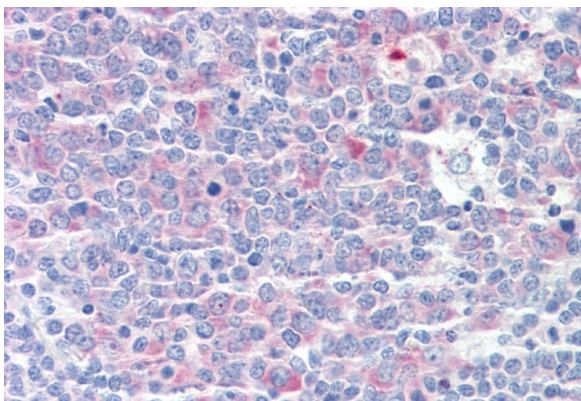
61 kDa

Images



ARG64951 anti-CCT3 / TCP1 antibody WB image

Western Blot: Mouse Testis lysate (35 µg protein in RIPA buffer) stained with ARG64951 anti-CCT3 / TCP1 antibody at 0.01 µg/ml dilution.



ARG64951 anti-CCT3 / TCP1 antibody IHC-P image

Immunohistochemistry: Paraffin-embedded Human tonsil tissue. Antigen Retrieval: Steam tissue section in Citrate buffer (pH 6.0). The tissue section was stained with ARG64951 anti-CCT3 / TCP1 antibody at 5 µg/ml dilution followed by AP-staining.