

ARG64807 anti-Palladin antibody

Package: 100 µg
Store at: -20°C

Summary

Product Description	Goat Polyclonal antibody recognizes Palladin
Tested Reactivity	Hu
Predict Reactivity	Ms, Rat, Dog
Tested Application	WB
Host	Goat
Clonality	Polyclonal
Isotype	IgG
Target Name	Palladin
Species	Human
Immunogen	C-RDSGDENEPIQER
Conjugation	Un-conjugated
Alternate Names	CGI151; Sarcoma antigen NY-SAR-77; PNCA1; CGI-151; MYN; Palladin; SIH002

Application Instructions

Application table	Application	Dilution
	WB	0.1 - 0.3 µg/ml
Application Note	WB: Recommend incubate at RT for 1h. * The dilutions indicate recommended starting dilutions and the optimal dilutions or concentrations should be determined by the scientist.	

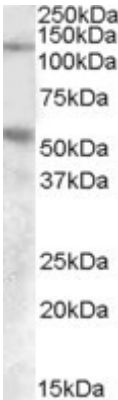
Properties

Form	Liquid
Purification	Purified from goat serum by antigen affinity chromatography.
Buffer	Tris saline (pH 7.3), 0.02% Sodium azide and 0.5% BSA.
Preservative	0.02% Sodium azide
Stabilizer	0.5% BSA
Concentration	0.5 mg/ml
Storage instruction	For continuous use, store undiluted antibody at 2-8°C for up to a week. For long-term storage, aliquot and store at -20°C or below. Storage in frost free freezers is not recommended. Avoid repeated freeze/thaw cycles. Suggest spin the vial prior to opening. The antibody solution should be gently mixed before use.
Note	For laboratory research only, not for drug, diagnostic or other use.

Bioinformation

Database links	GeneID: 23022 Human Swiss-port # Q8WX93 Human
Background	This gene encodes a cytoskeletal protein that is required for organizing the actin cytoskeleton. The protein is a component of actin-containing microfilaments, and it is involved in the control of cell shape, adhesion, and contraction. Polymorphisms in this gene are associated with a susceptibility to pancreatic cancer type 1, and also with a risk for myocardial infarction. Alternative splicing results in multiple transcript variants. [provided by RefSeq, Oct 2009]
Research Area	Controls and Markers antibody; Signaling Transduction antibody
Calculated Mw	151 kDa
PTM	Phosphorylated predominantly on serines and, to a lesser extent, on tyrosines (By similarity). Phosphorylation at Ser-1118 by PKB/AKT1 modulates cytoskeletal organization and cell motility.

Images



ARG64807 anti-Palladin antibody WB image

Western Blot: Human Umbilical Cord lysate (35 µg protein in RIPA buffer) with (B) and without (A) blocking with the immunising peptide. stained with ARG64807 anti-Palladin (aa895-907) antibody at 0.1 µg/ml dilution.