

ARG64713 anti-LASS1 antibody

Package: 100 µg
Store at: -20°C

Summary

Product Description	Goat Polyclonal antibody recognizes LASS1
Tested Reactivity	Hu
Predict Reactivity	Ms, Cow, Pig
Tested Application	WB
Specificity	This antibody is expected to recognize both reported isoforms (NP_067090.1 and NP_937850.1).
Host	Goat
Clonality	Polyclonal
Isotype	IgG
Target Name	LASS1
Species	Human
Immunogen	C-KDLREYDTAEAQ
Conjugation	Un-conjugated
Alternate Names	LASS1; Longevity assurance gene 1 protein homolog 1; CerS1; EPM8; LAG1; LAG1 longevity assurance homolog 1; UOG1; Ceramide synthase 1; Protein UOG-1

Application Instructions

Application table	<table> <tr> <th>Application</th><th>Dilution</th></tr> <tr> <td>WB</td><td>1 - 3 µg/ml</td></tr> </table>	Application	Dilution	WB	1 - 3 µg/ml
Application	Dilution				
WB	1 - 3 µg/ml				
Application Note	<p>WB: Recommend incubate at RT for 1h.</p> <p>* The dilutions indicate recommended starting dilutions and the optimal dilutions or concentrations should be determined by the scientist.</p>				

Properties

Form	Liquid
Purification	Purified from goat serum by antigen affinity chromatography.
Buffer	Tris saline (pH 7.3), 0.02% Sodium azide and 0.5% BSA.
Preservative	0.02% Sodium azide
Stabilizer	0.5% BSA
Concentration	0.5 mg/ml
Storage instruction	For continuous use, store undiluted antibody at 2-8°C for up to a week. For long-term storage, aliquot and store at -20°C or below. Storage in frost free freezers is not recommended. Avoid repeated freeze/thaw cycles. Suggest spin the vial prior to opening. The antibody solution should be gently mixed before use.

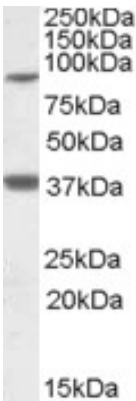
Note

For laboratory research only, not for drug, diagnostic or other use.

Bioinformation

Database links	GeneID: 10715 Human Swiss-port # P27544 Human
Background	This gene encodes a member of the bone morphogenetic protein (BMP) family and the TGF-beta superfamily. This group of proteins is characterized by a polybasic proteolytic processing site that is cleaved to produce a mature protein containing seven conserved cysteine residues. Members of this family are regulators of cell growth and differentiation in both embryonic and adult tissues. Studies in yeast suggest that the encoded protein is involved in aging. This protein is transcribed from a monocistronic mRNA as well as a bicistronic mRNA, which also encodes growth differentiation factor 1. [provided by RefSeq, Jul 2008]
Research Area	Cancer antibody; Metabolism antibody; Signaling Transduction antibody
Calculated Mw	40 kDa

Images



ARG64713 anti-LASS1 antibody WB image

Western Blot: Frontal Cortex lysate (35 µg protein in RIPA buffer) stained with ARG64713 anti-LASS1 antibody at 1 µg/ml dilution.