

## ARG64629 anti-alpha 2 Antiplasmin antibody

Package: 100 µg  
Store at: -20°C

### Summary

Product Description	Goat Polyclonal antibody recognizes alpha 2 Antiplasmin
Tested Reactivity	Hu
Tested Application	ELISA, IHC-P, WB
Specificity	This antibody is expected to recognise both reported isoforms (NP_000925.2; NP_001159393.1). Reported variants represent identical protein (NP_000925.2; NP_001159392.1).
Host	Goat
Clonality	Polyclonal
Isotype	IgG
Target Name	alpha 2 Antiplasmin
Species	Human
Immunogen	C-KDFLQSLKGFPRGDK
Conjugation	Un-conjugated
Alternate Names	Alpha-2-AP; Serpin F2; Alpha-2-PI; Alpha-2-antiplasmin; Alpha-2-plasmin inhibitor; AAP; API; PLI; A2AP; ALPHA-2-P

### Application Instructions

Application table	Application	Dilution
	ELISA	Assay - dependent
	IHC-P	3 - 5 µg/ml
	WB	0.3 - 1 µg/ml
Application Note	IHC-P: Antigen Retrieval: Steam tissue section in Citrate buffer (pH 6.0). WB: Recommend incubate at RT for 1h. * The dilutions indicate recommended starting dilutions and the optimal dilutions or concentrations should be determined by the scientist.	

### Properties

Form	Liquid
Purification	Purified from goat serum by antigen affinity chromatography.
Buffer	Tris saline (pH 7.3), 0.02% Sodium azide and 0.5% BSA.
Preservative	0.02% Sodium azide
Stabilizer	0.5% BSA
Concentration	0.5 mg/ml

Storage instruction	For continuous use, store undiluted antibody at 2-8°C for up to a week. For long-term storage, aliquot and store at -20°C or below. Storage in frost free freezers is not recommended. Avoid repeated freeze/thaw cycles. Suggest spin the vial prior to opening. The antibody solution should be gently mixed before use.
Note	For laboratory research only, not for drug, diagnostic or other use.

## Bioinformation

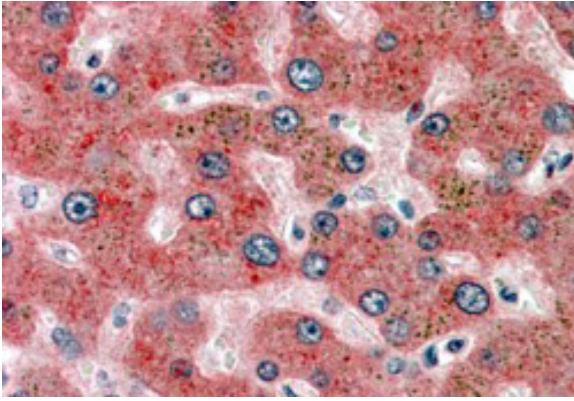
Database links	<a href="#">GeneID: 5345 Human</a> <a href="#">Swiss-port # P08697 Human</a>
Gene Symbol	SERPINF2
Gene Full Name	serpin family F member 2
Background	This gene encodes a member of the serpin family of serine protease inhibitors. The protein is a major inhibitor of plasmin, which degrades fibrin and various other proteins. Consequently, the proper function of this gene has a major role in regulating the blood clotting pathway. Mutations in this gene result in alpha-2-plasmin inhibitor deficiency, which is characterized by severe hemorrhagic diathesis. Multiple transcript variants encoding different isoforms have been found for this gene. [provided by RefSeq, Sep 2009]
Function	Serine protease inhibitor. The major targets of this inhibitor are plasmin and trypsin, but it also inactivates matriptase-3/TMPRSS7 and chymotrypsin.
Research Area	Cell Biology and Cellular Response antibody; Neuroscience antibody
Calculated Mw	55 kDa
PTM	Proteolytically cleaved at Pro-39 by both the prolyl endopeptidase FAP form and antiplasmin-cleaving enzyme FAP soluble form to generate mature alpha-2-antiplasmin.
Cellular Localization	Secreted.

## Images



ARG64629 anti-alpha 2 Antiplasmin antibody WB image

Western blot: Human Duodenum lysate (35 µg protein in RIPA buffer) stained with ARG64629 anti-alpha 2 Antiplasmin antibody at 0.1 µg/ml dilution.



#### ARG64629 anti-alpha 2 Antiplasmin antibody IHC-P image

Immunohistochemistry: Paraffin embedded Human Liver. (Steamed antigen retrieval with citrate buffer pH 6) stained with ARG64629 anti-alpha 2 Antiplasmin antibody at 3.8 µg/ml dilution followed by AP-staining.