

## ARG64586 anti-KPNA6 antibody

Package: 100 µg  
Store at: -20°C

### Summary

Product Description	Goat Polyclonal antibody recognizes KPNA6
Tested Reactivity	Hu
Predict Reactivity	Ms, Rat, Cow, Dog, Pig
Tested Application	IHC-P, WB
Host	Goat
Clonality	Polyclonal
Isotype	IgG
Target Name	KPNA6
Species	Human
Immunogen	C-STTGESVITREMVE
Conjugation	Un-conjugated
Alternate Names	KPNA7; Importin subunit alpha-7; IPOA7; Karyopherin subunit alpha-6

### Application Instructions

Application table	Application	Dilution
	IHC-P	3 - 6 µg/ml
	WB	0.1 - 0.3 µg/ml
Application Note	IHC-P: Antigen Retrieval: Steam tissue section in Citrate buffer (pH 6.0). WB: Recommend incubate at RT for 1h. * The dilutions indicate recommended starting dilutions and the optimal dilutions or concentrations should be determined by the scientist.	

### Properties

Form	Liquid
Purification	Purified from goat serum by antigen affinity chromatography.
Buffer	Tris saline (pH 7.3), 0.02% Sodium azide and 0.5% BSA.
Preservative	0.02% Sodium azide
Stabilizer	0.5% BSA
Concentration	0.5 mg/ml
Storage instruction	For continuous use, store undiluted antibody at 2-8°C for up to a week. For long-term storage, aliquot and store at -20°C or below. Storage in frost free freezers is not recommended. Avoid repeated freeze/thaw cycles. Suggest spin the vial prior to opening. The antibody solution should be gently mixed before use.

Note

For laboratory research only, not for drug, diagnostic or other use.

Bioinformation

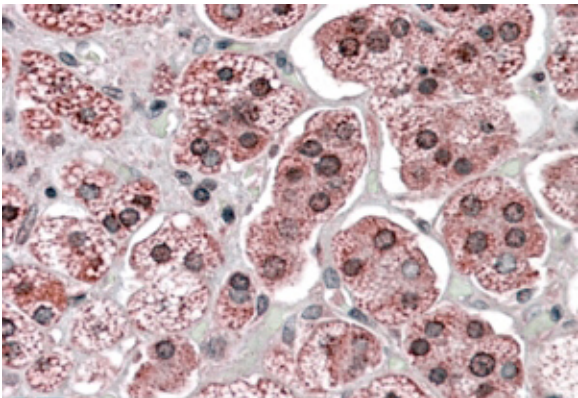
Database links	<a href="#">GeneID: 23633 Human</a> <a href="#">Swiss-port # O60684 Human</a>
Background	Nucleocytoplasmic transport, a signal- and energy-dependent process, takes place through nuclear pore complexes embedded in the nuclear envelope. The import of proteins containing a nuclear localization signal (NLS) requires the NLS import receptor, a heterodimer of importin alpha and beta subunits also known as karyopherins. Importin alpha binds the NLS-containing cargo in the cytoplasm and importin beta docks the complex at the cytoplasmic side of the nuclear pore complex. In the presence of nucleoside triphosphates and the small GTP binding protein Ran, the complex moves into the nuclear pore complex and the importin subunits dissociate. Importin alpha enters the nucleoplasm with its passenger protein and importin beta remains at the pore. The protein encoded by this gene is a member of the importin alpha family. [provided by RefSeq, Jul 2008]
Research Area	Signaling Transduction antibody
Calculated Mw	60 kDa

Images



ARG64586 anti-KPNA6 antibody WB image

Western Blot: Human Muscle lysate (35 µg protein in RIPA buffer) stained with ARG64586 anti-KPNA6 antibody at 0.1 µg/ml dilution.



ARG64586 anti-KPNA6 antibody IHC-P image

Immunohistochemistry: paraffin embedded Human Adrenal Gland. (Steamed antigen retrieval with citrate buffer pH 6) stained with ARG64586 anti-KPNA6 antibody at 3.8 µg/ml dilution followed by AP-staining.