

## ARG64553 anti-LHX2 antibody

Package: 100 µg  
Store at: -20°C

### Summary

Product Description	Goat Polyclonal antibody recognizes LHX2
Tested Reactivity	Hu
Predict Reactivity	Ms, Rat, Dog
Tested Application	WB
Host	Goat
Clonality	Polyclonal
Isotype	IgG
Target Name	LHX2
Species	Human
Immunogen	C-NLEGHEPHSPSQ
Conjugation	Un-conjugated
Alternate Names	LIM homeobox protein 2; LIM/homeobox protein Lhx2; hLhx2; LH2; Homeobox protein LH-2

### Application Instructions

Application table	Application	Dilution
	WB	1 - 3 µg/ml
Application Note	WB: Recommend incubate at RT for 1h. * The dilutions indicate recommended starting dilutions and the optimal dilutions or concentrations should be determined by the scientist.	

### Properties

Form	Liquid
Purification	Purified from goat serum by antigen affinity chromatography.
Buffer	Tris saline (pH 7.3), 0.02% Sodium azide and 0.5% BSA.
Preservative	0.02% Sodium azide
Stabilizer	0.5% BSA
Concentration	0.5 mg/ml
Storage instruction	For continuous use, store undiluted antibody at 2-8°C for up to a week. For long-term storage, aliquot and store at -20°C or below. Storage in frost free freezers is not recommended. Avoid repeated freeze/thaw cycles. Suggest spin the vial prior to opening. The antibody solution should be gently mixed before use.
Note	For laboratory research only, not for drug, diagnostic or other use.

## Bioinformation

---

### Database links

[GeneID: 9355 Human](#)

[Swiss-port # P50458 Human](#)

### Background

This gene encodes a protein belonging to a large protein family, members of which carry the LIM domain, a unique cysteine-rich zinc-binding domain. The encoded protein may function as a transcriptional regulator. The protein can recapitulate or rescue phenotypes in *Drosophila* caused by a related protein, suggesting conservation of function during evolution. [provided by RefSeq, Jul 2008]

### Research Area

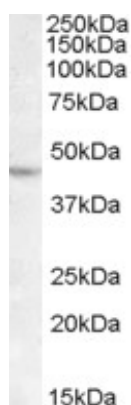
Developmental Biology antibody; Gene Regulation antibody; Neuroscience antibody

### Calculated Mw

44 kDa

## Images

---



ARG64553 anti-LHX2 antibody WB image

Western Blot: DAUDI lysate (35 µg protein in RIPA buffer) stained with ARG64553 anti-LHX2 antibody at 1 µg/ml dilution.