

**ARG64537**  
**anti-TXL2 / TXNDC6 antibody**Package: 100 µg  
Store at: -20°C

### Summary

Product Description	Goat Polyclonal antibody recognizes TXL2 / TXNDC6
Tested Reactivity	Hu
Tested Application	WB
Host	Goat
Clonality	Polyclonal
Isotype	IgG
Target Name	TXL2 / TXNDC6
Species	Human
Immunogen	C-ESSTQPRLKITDLD
Conjugation	Un-conjugated
Alternate Names	Thioredoxin domain-containing protein 6; NM23-H9; Txl-2; Thioredoxin-like protein 2; TXL-2; TXL2; TXNDC6

### Application Instructions

Application table	Application	Dilution
	WB	1 - 3 µg/ml
Application Note	WB: Recommend incubate at RT for 1h. * The dilutions indicate recommended starting dilutions and the optimal dilutions or concentrations should be determined by the scientist.	

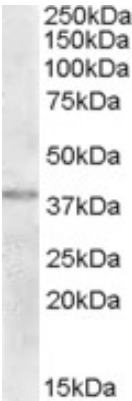
### Properties

Form	Liquid
Purification	Purified from goat serum by antigen affinity chromatography.
Buffer	Tris saline (pH 7.3), 0.02% Sodium azide and 0.5% BSA.
Preservative	0.02% Sodium azide
Stabilizer	0.5% BSA
Concentration	0.5 mg/ml
Storage instruction	For continuous use, store undiluted antibody at 2-8°C for up to a week. For long-term storage, aliquot and store at -20°C or below. Storage in frost free freezers is not recommended. Avoid repeated freeze/thaw cycles. Suggest spin the vial prior to opening. The antibody solution should be gently mixed before use.
Note	For laboratory research only, not for drug, diagnostic or other use.

Bioinformation

Database links	<a href="#">GeneID: 347736 Human</a> <a href="#">Swiss-port # Q86XW9 Human</a>
Gene Symbol	NME9
Gene Full Name	NME/NM23 family member 9
Function	May be a regulator of microtubule physiology. [UniProt]
Research Area	Cell Biology and Cellular Response antibody
Calculated Mw	37 kDa

Images



ARG64537 anti-TXL2 / TXNDC6 antibody WB image

Western Blot: Human Uterus lysate (35 µg protein in RIPA buffer) stained with ARG64537 anti-TXL2 / TXNDC6 antibody at 2 µg/ml dilution.