

## ARG64489 anti-MTHFD2L antibody

Package: 100 µg  
Store at: -20°C

### Summary

Product Description	Goat Polyclonal antibody recognizes MTHFD2L
Tested Reactivity	Hu
Tested Application	WB
Host	Goat
Clonality	Polyclonal
Isotype	IgG
Target Name	MTHFD2L
Species	Human
Immunogen	KHIQKEIQRGVES-C
Conjugation	Un-conjugated
Alternate Names	EC 1.5.1.15; EC 3.5.4.9; Probable bifunctional methylenetetrahydrofolate dehydrogenase/cyclohydrolase 2; MTHFD2-like; NADP-dependent methylenetetrahydrofolate dehydrogenase 2-like protein

### Application Instructions

Application table	Application	Dilution
	WB	0.1 - 0.3 µg/ml
Application Note	WB: Recommend incubate at RT for 1h. * The dilutions indicate recommended starting dilutions and the optimal dilutions or concentrations should be determined by the scientist.	

### Properties

Form	Liquid
Purification	Purified from goat serum by antigen affinity chromatography.
Buffer	Tris saline (pH 7.3), 0.02% Sodium azide and 0.5% BSA.
Preservative	0.02% Sodium azide
Stabilizer	0.5% BSA
Concentration	0.5 mg/ml
Storage instruction	For continuous use, store undiluted antibody at 2-8°C for up to a week. For long-term storage, aliquot and store at -20°C or below. Storage in frost free freezers is not recommended. Avoid repeated freeze/thaw cycles. Suggest spin the vial prior to opening. The antibody solution should be gently mixed before use.
Note	For laboratory research only, not for drug, diagnostic or other use.

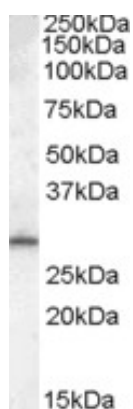
## Bioinformation

---

Database links	<a href="#">GeneID: 441024 Human</a> <a href="#">Swiss-port # Q9H903 Human</a>
Gene Symbol	MTHFD2L
Gene Full Name	methylenetetrahydrofolate dehydrogenase (NADP+ dependent) 2-like
Research Area	Metabolism antibody; Signaling Transduction antibody
Calculated Mw	37 kDa

## Images

---



ARG64489 anti-MTHFD2L antibody WB image

Western Blot: Human Testis lysate (35 µg protein in RIPA buffer) stained with ARG64489 anti-MTHFD2L antibody at 0.1 µg/ml dilution.