

ARG64481 anti-RASSF8 antibody

Package: 100 µg
Store at: -20°C

Summary

Product Description	Goat Polyclonal antibody recognizes RASSF8
Tested Reactivity	Hu
Predict Reactivity	Ms, Cow
Tested Application	WB
Host	Goat
Clonality	Polyclonal
Isotype	IgG
Target Name	RASSF8
Species	Human
Immunogen	C-RDTERHLAPHEN
Conjugation	Un-conjugated
Alternate Names	HOJ1; Ras association domain-containing protein 8; C12orf2; Carcinoma-associated protein HOJ-1

Application Instructions

Application table	Application	Dilution
	WB	0.3 - 1 µg/ml
Application Note	WB: Recommend incubate at RT for 1h. * The dilutions indicate recommended starting dilutions and the optimal dilutions or concentrations should be determined by the scientist.	

Properties

Form	Liquid
Purification	Purified from goat serum by antigen affinity chromatography.
Buffer	Tris saline (pH 7.3), 0.02% Sodium azide and 0.5% BSA.
Preservative	0.02% Sodium azide
Stabilizer	0.5% BSA
Concentration	0.5 mg/ml
Storage instruction	For continuous use, store undiluted antibody at 2-8°C for up to a week. For long-term storage, aliquot and store at -20°C or below. Storage in frost free freezers is not recommended. Avoid repeated freeze/thaw cycles. Suggest spin the vial prior to opening. The antibody solution should be gently mixed before use.
Note	For laboratory research only, not for drug, diagnostic or other use.

Bioinformation

Database links

[GeneID: 11228 Human](#)

[Swiss-port # Q8NHQ8 Human](#)

Background

This gene encodes a member of the Ras-association domain family (RASSF) of tumor suppressor proteins. This gene is essential for maintaining adherens junction function in epithelial cells and has a role in epithelial cell migration. It is a lung tumor suppressor gene candidate. A chromosomal translocation t(12;22)(p11.2;q13.3) leading to the fusion of this gene and the FBLN1 gene is found in a complex type of synpolydactyly. Multiple alternatively spliced transcript variants encoding different isoforms have been found for this gene. [provided by RefSeq, May 2011]

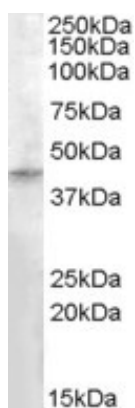
Research Area

Cancer antibody; Signaling Transduction antibody

Calculated Mw

48 kDa

Images



ARG64481 anti-RASSF8 antibody WB image

Western Blot: Human Testis lysate (35 µg protein in RIPA buffer) stained with ARG64481 anti-RASSF8 antibody at 0.3 µg/ml dilution.