

ARG64445 anti-CK1 epsilon antibody

Package: 100 µg
Store at: -20°C

Summary

Product Description	Goat Polyclonal antibody recognizes CK1 epsilon
Tested Reactivity	Hu
Predict Reactivity	Ms, Rat, Dog
Tested Application	IHC-P, WB
Specificity	Both reported variants represent identical protein (NP_001885.1 and NP_689407.1).
Host	Goat
Clonality	Polyclonal
Isotype	IgG
Target Name	CK1 epsilon
Species	Human
Immunogen	C-PASQTSVPFDHLGK
Conjugation	Un-conjugated
Alternate Names	tau; CK1epsilon; Casein kinase I isoform epsilon; AI426939; CK1e; CKI-epsilon; AW457082; AI551861; EC 2.7.11.1; KC1epsilon

Application Instructions

Application table	Application	Dilution
	IHC-P	5 µg/ml
	WB	0.3 - 1 µg/ml
Application Note	WB: Recommend incubate at RT for 1h. IHC-P: Antigen Retrieval: Steam tissue section in Citrate buffer (pH 6.0). * The dilutions indicate recommended starting dilutions and the optimal dilutions or concentrations should be determined by the scientist.	

Properties

Form	Liquid
Purification	Purified from goat serum by antigen affinity chromatography.
Buffer	Tris saline (pH 7.3), 0.02% Sodium azide and 0.5% BSA.
Preservative	0.02% Sodium azide
Stabilizer	0.5% BSA
Concentration	0.5 mg/ml
Storage instruction	For continuous use, store undiluted antibody at 2-8°C for up to a week. For long-term storage, aliquot and store at -20°C or below. Storage in frost free freezers is not recommended. Avoid repeated

freeze/thaw cycles. Suggest spin the vial prior to opening. The antibody solution should be gently mixed before use.

Note

For laboratory research only, not for drug, diagnostic or other use.

Bioinformation

Database links

[GeneID: 1454 Human](#)

[Swiss-port # P49674 Human](#)

Background

The protein encoded by this gene is a serine/threonine protein kinase and a member of the casein kinase I protein family, whose members have been implicated in the control of cytoplasmic and nuclear processes, including DNA replication and repair. The encoded protein is found in the cytoplasm as a monomer and can phosphorylate a variety of proteins, including itself. This protein has been shown to phosphorylate period, a circadian rhythm protein. Two transcript variants encoding the same protein have been found for this gene. [provided by RefSeq, Jul 2008]

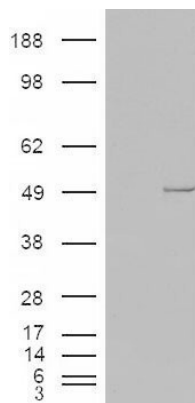
Research Area

Signaling Transduction antibody

Calculated Mw

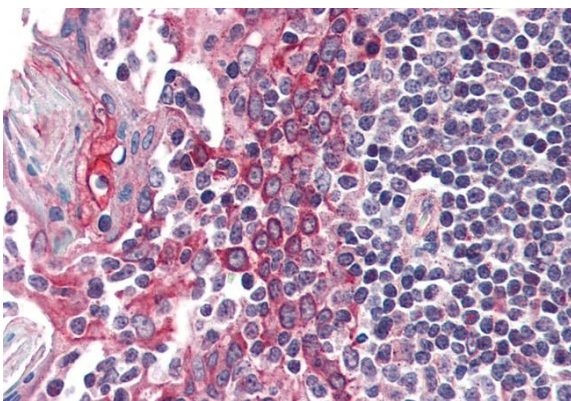
47 kDa

Images



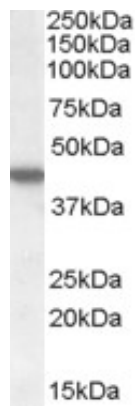
ARG64445 anti-CK1 epsilon antibody WB image

Western blot: 1) Mock transfection and 2) CSNK1E expressing plasmid transfected HEK293 cell lysate stained with ARG64445 anti-CK1 epsilon antibody.



ARG64445 anti-CK1 epsilon antibody IHC-P image

Immunohistochemistry: Paraffin-embedded Human tonsil tissue. Antigen Retrieval: Steam tissue section in Citrate buffer (pH 6.0). The tissue section was stained with ARG64445 anti-CK1 epsilon antibody at 5 µg/ml dilution followed by AP-staining.



ARG64445 anti-CK1 epsilon antibody WB image

Western blot: 35 µg of HEK293 cell lysate (in RIPA buffer) stained with ARG64445 anti-CK1 epsilon antibody at 1 µg/ml dilution and incubated at RT for 1 hour.