

**ARG64435**  
**anti-NPFFR1 antibody**Package: 100 µg  
Store at: -20°C

### Summary

Product Description	Goat Polyclonal antibody recognizes NPFFR1
Tested Reactivity	Hu
Tested Application	WB
Host	Goat
Clonality	Polyclonal
Isotype	IgG
Target Name	NPFFR1
Species	Human
Immunogen	C-RPSGSHKEAYSERP
Conjugation	Un-conjugated
Alternate Names	Neuropeptide FF receptor 1; NPFF1; NPFF1R1; OT7T022; G-protein coupled receptor 147; GPR147; RFamide-related peptide receptor OT7T022

### Application Instructions

Application table	Application	Dilution
	WB	0.03 - 0.1 µg/ml
Application Note	WB: Recommend incubate at RT for 1h. * The dilutions indicate recommended starting dilutions and the optimal dilutions or concentrations should be determined by the scientist.	

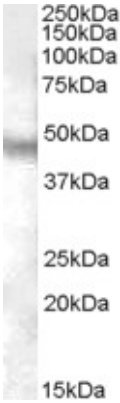
### Properties

Form	Liquid
Purification	Purified from goat serum by antigen affinity chromatography.
Buffer	Tris saline (pH 7.3), 0.02% Sodium azide and 0.5% BSA.
Preservative	0.02% Sodium azide
Stabilizer	0.5% BSA
Concentration	0.5 mg/ml
Storage instruction	For continuous use, store undiluted antibody at 2-8°C for up to a week. For long-term storage, aliquot and store at -20°C or below. Storage in frost free freezers is not recommended. Avoid repeated freeze/thaw cycles. Suggest spin the vial prior to opening. The antibody solution should be gently mixed before use.
Note	For laboratory research only, not for drug, diagnostic or other use.

Bioinformation

Database links	<a href="#">GeneID: 64106 Human</a> <a href="#">Swiss-port # Q9GZQ6 Human</a>
Gene Symbol	NPFFR1
Gene Full Name	neuropeptide FF receptor 1
Function	Receptor for NPAF (A-18-F-amide) and NPFF (F-8-F-amide) neuropeptides, also known as morphine-modulating peptides. Can also be activated by a variety of naturally occurring or synthetic FMRF-amide like ligands. This receptor mediates its action by association with G proteins that activate a phosphatidylinositol-calcium second messenger system. [UniProt]
Research Area	Neuroscience antibody; Signaling Transduction antibody
Calculated Mw	48 kDa

Images



ARG64435 anti-NPFFR1 antibody WB image

Western Blot: Human Brain (Cerebellum) lysate (35 µg protein in RIPA buffer) stained with ARG64435 anti-NPFFR1 antibody at 0.03 µg/ml dilution.