

ARG64412 anti-Aspartate Aminotransferase antibody

Package: 100 µg
Store at: -20°C

Summary

Product Description	Goat Polyclonal antibody recognizes Aspartate Aminotransferase
Tested Reactivity	Hu
Predict Reactivity	Rat
Tested Application	IHC-P, WB
Host	Goat
Clonality	Polyclonal
Isotype	IgG
Target Name	Aspartate Aminotransferase
Species	Human
Immunogen	C-RSRYWDAEKR
Conjugation	Un-conjugated
Alternate Names	Cysteine transaminase, cytoplasmic; cAspAT; GIG18; Glutamate oxaloacetate transaminase 1; cCAT; EC 2.6.1.3; Cysteine aminotransferase, cytoplasmic; ASTQTL1; AST1; EC 2.6.1.1; Transaminase A; Aspartate aminotransferase, cytoplasmic

Application Instructions

Application table	Application	Dilution
	IHC-P	2 - 5 µg/ml
	WB	0.01 - 1 µg/ml
Application Note	WB: Recommend incubate at RT for 1h. IHC-P: Antigen Retrieval: Steam tissue section in Citrate buffer (pH 6.0). * The dilutions indicate recommended starting dilutions and the optimal dilutions or concentrations should be determined by the scientist.	

Properties

Form	Liquid
Purification	Purified from goat serum by antigen affinity chromatography.
Buffer	Tris saline (pH 7.3), 0.02% Sodium azide and 0.5% BSA.
Preservative	0.02% Sodium azide
Stabilizer	0.5% BSA
Concentration	0.5 mg/ml
Storage instruction	For continuous use, store undiluted antibody at 2-8°C for up to a week. For long-term storage, aliquot and store at -20°C or below. Storage in frost free freezers is not recommended. Avoid repeated

freeze/thaw cycles. Suggest spin the vial prior to opening. The antibody solution should be gently mixed before use.

Note

For laboratory research only, not for drug, diagnostic or other use.

Bioinformation

Database links

[GeneID: 2805 Human](#)

[Swiss-port # P17174 Human](#)

Background

Glutamic-oxaloacetic transaminase is a pyridoxal phosphate-dependent enzyme which exists in cytoplasmic and mitochondrial forms, GOT1 and GOT2, respectively. GOT plays a role in amino acid metabolism and the urea and tricarboxylic acid cycles. The two enzymes are homodimeric and show close homology. [provided by RefSeq, Jul 2008]

Research Area

Cancer antibody; Metabolism antibody; Signaling Transduction antibody

Calculated Mw

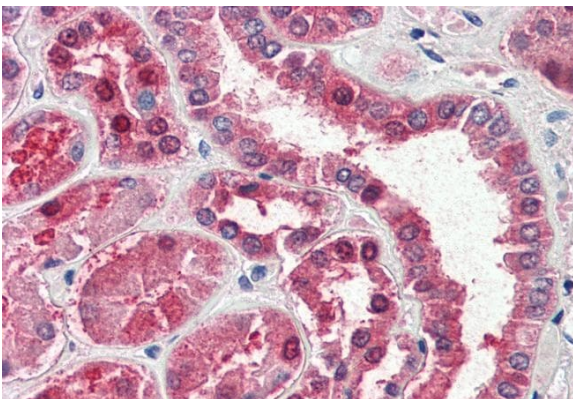
46 kDa

Images



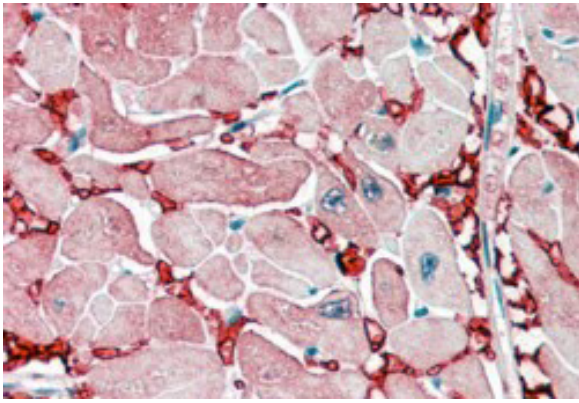
ARG64412 anti-Aspartate Aminotransferase antibody WB image

Western blot: 35 µg of Human Liver lysate stained with ARG64412 anti-Aspartate Aminotransferase antibody at 0.01 µg/ml dilution.



ARG64412 anti-Aspartate Aminotransferase antibody IHC-P image

Immunohistochemistry: Paraffin-embedded Human kidney tissue. Antigen Retrieval: Steam tissue section in Citrate buffer (pH 6.0). The tissue section was stained with ARG64412 anti-Aspartate Aminotransferase antibody at 5 µg/ml dilution followed by AP-staining.



ARG64412 anti-Aspartate Aminotransferase antibody IHC image

Immunohistochemistry: paraffin-embedded Human Heart (Steamed antigen retrieval with citrate buffer pH 6) stained with ARG64412 anti-Aspartate Aminotransferase antibody at 2.5 µg/ml dilution, followed by AP-staining.