

## ARG64378 anti-GOT2 antibody

Package: 100 µg  
Store at: -20°C

### Summary

Product Description	Goat Polyclonal antibody recognizes GOT2
Tested Reactivity	Hu
Predict Reactivity	Ms, Rat
Tested Application	WB
Host	Goat
Clonality	Polyclonal
Isotype	IgG
Target Name	GOT2
Species	Human
Immunogen	C-SNLKKEGSTHNWQH
Conjugation	Un-conjugated
Alternate Names	Kynurenine aminotransferase 4; mitAAT; Plasma membrane-associated fatty acid-binding protein; Kynurenine--oxoglutarate transaminase 4; Glutamate oxaloacetate transaminase 2; KAT4; Transaminase A; KATIV; FABP-1; Aspartate aminotransferase, mitochondrial; FABPpm; Fatty acid-binding protein; Kynurenine--oxoglutarate transaminase IV; mAspAT; Kynurenine aminotransferase IV; EC 2.6.1.1; EC 2.6.1.7

### Application Instructions

Application table	Application	Dilution
	WB	0.3 - 1 µg/ml

**Application Note** WB: Recommend incubate at RT for 1h.  
\* The dilutions indicate recommended starting dilutions and the optimal dilutions or concentrations should be determined by the scientist.

### Properties

Form	Liquid
Purification	Purified from goat serum by antigen affinity chromatography.
Buffer	Tris saline (pH 7.3), 0.02% Sodium azide and 0.5% BSA.
Preservative	0.02% Sodium azide
Stabilizer	0.5% BSA
Concentration	0.5 mg/ml
Storage instruction	For continuous use, store undiluted antibody at 2-8°C for up to a week. For long-term storage, aliquot and store at -20°C or below. Storage in frost free freezers is not recommended. Avoid repeated freeze/thaw cycles. Suggest spin the vial prior to opening. The antibody solution should be gently mixed

before use.

#### Note

For laboratory research only, not for drug, diagnostic or other use.

## Bioinformation

---

#### Database links

[GeneID: 2806 Human](#)

[Swiss-port # P00505 Human](#)

#### Background

Glutamic-oxaloacetic transaminase is a pyridoxal phosphate-dependent enzyme which exists in cytoplasmic and inner-membrane mitochondrial forms, GOT1 and GOT2, respectively. GOT plays a role in amino acid metabolism and the urea and tricarboxylic acid cycles. The two enzymes are homodimeric and show close homology. [provided by RefSeq, Jul 2008]

#### Research Area

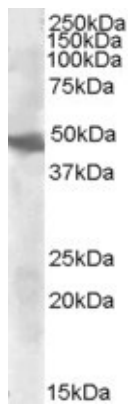
Cancer antibody; Metabolism antibody; Signaling Transduction antibody

#### Calculated Mw

48 kDa

## Images

---



ARG64378 anti-GOT2 antibody WB image

Western Blot: Human Liver cell lysate (35 µg protein in RIPA buffer) stained with ARG64378 anti-GOT2 (aa 360 to 373) antibody at 0.3 µg/ml dilution.