

ARG64343 anti-IGFBP3 antibody

Package: 100 µg
Store at: -20°C

Summary

Product Description	Goat Polyclonal antibody recognizes IGFBP3
Tested Reactivity	Hu
Predict Reactivity	Ms, Rat, Dog
Tested Application	WB
Specificity	This antibody is expected to recognise both reported isoforms (NP_001013416.1 and NP_000589.2).
Host	Goat
Clonality	Polyclonal
Isotype	IgG
Target Name	IGFBP3
Species	Human
Immunogen	C-RYKVDYESQSTDTQN
Conjugation	Un-conjugated
Alternate Names	IBP-3; IBP3; Insulin-like growth factor-binding protein 3; IGFBP-3; IGF-binding protein 3; BP-53

Application Instructions

Application table	Application	Dilution
	WB	0.02 - 0.06 µg/ml
Application Note	WB: Recommend incubate at RT for 1h. * The dilutions indicate recommended starting dilutions and the optimal dilutions or concentrations should be determined by the scientist.	

Properties

Form	Liquid
Purification	Purified from goat serum by antigen affinity chromatography.
Buffer	Tris saline (pH 7.3), 0.02% Sodium azide and 0.5% BSA.
Preservative	0.02% Sodium azide
Stabilizer	0.5% BSA
Concentration	0.5 mg/ml
Storage instruction	For continuous use, store undiluted antibody at 2-8°C for up to a week. For long-term storage, aliquot and store at -20°C or below. Storage in frost free freezers is not recommended. Avoid repeated freeze/thaw cycles. Suggest spin the vial prior to opening. The antibody solution should be gently mixed before use.

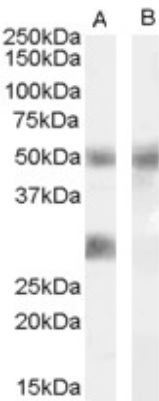
Note

For laboratory research only, not for drug, diagnostic or other use.

Bioinformation

Database links	GeneID: 3486 Human Swiss-port # P17936 Human
Background	This gene is a member of the insulin-like growth factor binding protein (IGFBP) family and encodes a protein with an IGFBP domain and a thyroglobulin type-I domain. The protein forms a ternary complex with insulin-like growth factor acid-labile subunit (IGFALS) and either insulin-like growth factor (IGF) I or II. In this form, it circulates in the plasma, prolonging the half-life of IGFs and altering their interaction with cell surface receptors. Alternate transcriptional splice variants, encoding different isoforms, have been characterized. [provided by RefSeq, Jul 2008]
Research Area	Cell Biology and Cellular Response antibody; Cell Death antibody; Metabolism antibody; Signaling Transduction antibody
Calculated Mw	32 kDa
PTM	Phosphorylated by FAM20C in the extracellular medium.

Images



ARG64343 anti-IGFBP3 antibody WB image

Western Blot: Human Breast cancer lysate (35 µg protein in RIPA buffer) with (B) and without (A) blocking with the immunising peptide. stained with ARG64343 anti-IGFBP3 antibody at 0.02 µg/ml dilution.