

**ARG64275**  
anti-STEAP4 / Dudulin 4 antibodyPackage: 100 µg  
Store at: -20°C

### Summary

Product Description	Goat Polyclonal antibody recognizes STEAP4 / Dudulin 4
Tested Reactivity	Hu
Predict Reactivity	Ms, Rat, Dog
Tested Application	WB
Host	Goat
Clonality	Polyclonal
Isotype	IgG
Target Name	STEAP4 / Dudulin 4
Species	Human
Immunogen	CVDNLTLRIRQGWERN
Conjugation	Un-conjugated
Alternate Names	TNFAIP9; Metalloreductase STEAP4; TIARP; SixTransMembrane protein of prostate 2; Six-transmembrane epithelial antigen of prostate 4; EC 1.16.1.-; STAMP2; Tumor necrosis factor, alpha-induced protein 9

### Application Instructions

Application table	Application	Dilution
	WB	0.3 - 1 µg/ml
Application Note	WB: Recommend incubate at RT for 1h. * The dilutions indicate recommended starting dilutions and the optimal dilutions or concentrations should be determined by the scientist.	

### Properties

Form	Liquid
Purification	Purified from goat serum by antigen affinity chromatography.
Buffer	Tris saline (pH 7.3), 0.02% Sodium azide and 0.5% BSA.
Preservative	0.02% Sodium azide
Stabilizer	0.5% BSA
Concentration	0.5 mg/ml
Storage instruction	For continuous use, store undiluted antibody at 2-8°C for up to a week. For long-term storage, aliquot and store at -20°C or below. Storage in frost free freezers is not recommended. Avoid repeated freeze/thaw cycles. Suggest spin the vial prior to opening. The antibody solution should be gently mixed before use.

Note For laboratory research only, not for drug, diagnostic or other use.

## Bioinformation

Database links [GeneID: 79689 Human](#)

[Swiss-port # Q687X5 Human](#)

### Background

The protein encoded by this gene belongs to the STEAP (six transmembrane epithelial antigen of prostate) family, and resides in the golgi apparatus. It functions as a metalloreductase that has the ability to reduce both Fe(3+) to Fe(2+) and Cu(2+) to Cu(1+), using NAD(+) as acceptor. Studies in mice and human suggest that this gene maybe involved in adipocyte development and metabolism, and may contribute to the normal biology of the prostate cell, as well as prostate cancer progression. Alternatively spliced transcript variants encoding different isoforms have been found for this gene. [provided by RefSeq, Apr 2011]

### Research Area

Cancer antibody; Metabolism antibody

### Calculated Mw

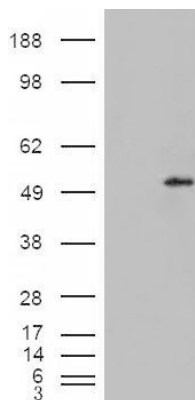
52 kDa

## Images



ARG64275 anti-STEAP4 / Dudulin 4 antibody WB image

Western blot: Human Adipose lysate (35 µg protein in RIPA buffer) stained with ARG64275 anti-STEAP4 / Dudulin 4 antibody at 0.3 µg/ml dilution.



ARG64275 anti-STEAP4 / Dudulin 4 antibody WB image

Western blot: 1). Mock transfection; 2) Dudulin4 (RC216917) expressing plasmid transfected HEK293 cell lysate standed with ARG64275 anti-STEAP4 / Dudulin 4 antibody.