

ARG64251 anti-FH / Fumarase antibody

Package: 100 µg
Store at: -20°C

Summary

Product Description	Goat Polyclonal antibody recognizes FH / Fumarase
Tested Reactivity	Hu
Predict Reactivity	Ms, Rat, Dog
Tested Application	IHC-P, WB
Host	Goat
Clonality	Polyclonal
Isotype	IgG
Target Name	FH / Fumarase
Species	Human
Immunogen	C-HPNDHVNKSQSSND
Conjugation	Un-conjugated
Alternate Names	MCUL1; MCL; LRCC; EC 4.2.1.2; Fumarate hydratase, mitochondrial; FMRD; Fumarase; HLRCC

Application Instructions

Application table	Application	Dilution
	IHC-P	3 - 5 µg/ml
	WB	0.01 - 0.03 µg/ml
Application Note	WB: Recommend incubate at RT for 1h. IHC-P: Antigen Retrieval: Steam tissue section in Citrate buffer (pH 6.0). * The dilutions indicate recommended starting dilutions and the optimal dilutions or concentrations should be determined by the scientist.	

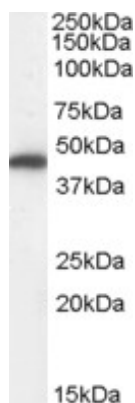
Properties

Form	Liquid
Purification	Purified from goat serum by antigen affinity chromatography.
Buffer	Tris saline (pH 7.3), 0.02% Sodium azide and 0.5% BSA.
Preservative	0.02% Sodium azide
Stabilizer	0.5% BSA
Concentration	0.5 mg/ml
Storage instruction	For continuous use, store undiluted antibody at 2-8°C for up to a week. For long-term storage, aliquot and store at -20°C or below. Storage in frost free freezers is not recommended. Avoid repeated freeze/thaw cycles. Suggest spin the vial prior to opening. The antibody solution should be gently mixed before use.

Bioinformation

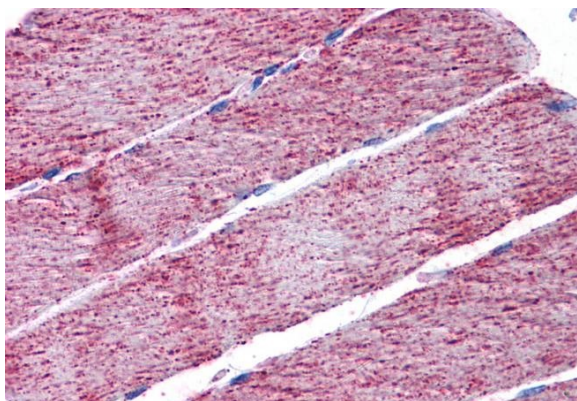
Database links	GeneID: 2271 Human Swiss-port # P07954 Human
Background	The protein encoded by this gene is an enzymatic component of the tricarboxylic acid (TCA) cycle, or Krebs cycle, and catalyzes the formation of L-malate from fumarate. It exists in both a cytosolic form and an N-terminal extended form, differing only in the translation start site used. The N-terminal extended form is targeted to the mitochondrion, where the removal of the extension generates the same form as in the cytoplasm. It is similar to some thermostable class II fumarases and functions as a homotetramer. Mutations in this gene can cause fumarase deficiency and lead to progressive encephalopathy. [provided by RefSeq, Jul 2008]
Highlight	Related products: Fumarase antibodies ; Fumarase ELISA Kits ; Anti-Goat IgG secondary antibodies ; Related news: TCA intermediate fumarate promotes mitobiogenesis
Research Area	Cancer antibody; Metabolism antibody; Signaling Transduction antibody
Calculated Mw	55 kDa

Images



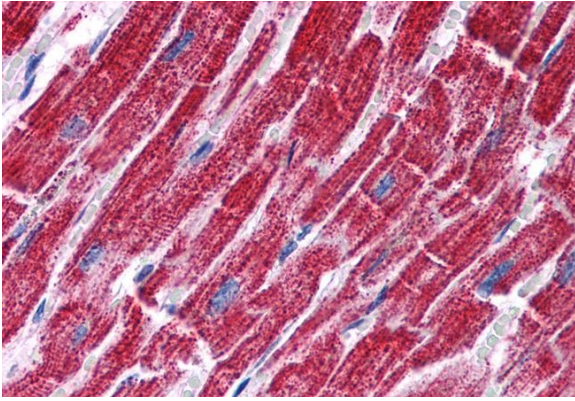
ARG64251 anti-FH / Fumarase antibody WB image

Western blot: Human Kidney lysate (35 µg protein in RIPA buffer) stained with ARG64251 anti-FH / Fumarase antibody at 0.01 µg/ml dilution.



ARG64251 anti-FH / Fumarase antibody IHC-P image

Immunohistochemistry: Paraffin-embedded Human skeletal muscle tissue. Antigen Retrieval: Steam tissue section in Citrate buffer (pH 6.0). The tissue section was stained with ARG64251 anti-FH / Fumarase antibody at 3.75 µg/ml dilution followed by AP-staining.



ARG64251 anti-FH / Fumarase antibody IHC-P image

Immunohistochemistry: Paraffin-embedded Human heart tissue.
Antigen Retrieval: Steam tissue section in Citrate buffer (pH 6.0). The tissue section was stained with ARG64251 anti-FH / Fumarase antibody at 3.75 µg/ml dilution followed by AP-staining.