

ARG64247 anti-IL12B / IL12 p40 antibody

Package: 100 µg
Store at: -20°C

Summary

Product Description	Goat Polyclonal antibody recognizes IL12B / IL12 p40
Tested Reactivity	Hu
Tested Application	WB
Host	Goat
Clonality	Polyclonal
Isotype	IgG
Target Name	IL12B / IL12 p40
Species	Human
Immunogen	C-QGKSKREKKDRVFTD
Conjugation	Un-conjugated
Alternate Names	CLMF; Interleukin-12 subunit beta; NK cell stimulatory factor chain 2; NKSF; CLMF p40; NKSF2; Cytotoxic lymphocyte maturation factor 40 kDa subunit; CLMF2; IL-12 subunit p40; IMD29; IMD28; IL-12B

Application Instructions

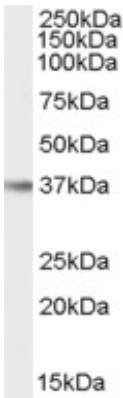
Application table	<table> <tr> <th>Application</th><th>Dilution</th></tr> <tr> <td>WB</td><td>0.3 - 1 µg/ml</td></tr> </table>	Application	Dilution	WB	0.3 - 1 µg/ml
Application	Dilution				
WB	0.3 - 1 µg/ml				
Application Note	<p>WB: Recommend incubate at RT for 1h.</p> <p>* The dilutions indicate recommended starting dilutions and the optimal dilutions or concentrations should be determined by the scientist.</p>				

Properties

Form	Liquid
Purification	Purified from goat serum by antigen affinity chromatography.
Buffer	Tris saline (pH 7.3), 0.02% Sodium azide and 0.5% BSA.
Preservative	0.02% Sodium azide
Stabilizer	0.5% BSA
Concentration	0.5 mg/ml
Storage instruction	For continuous use, store undiluted antibody at 2-8°C for up to a week. For long-term storage, aliquot and store at -20°C or below. Storage in frost free freezers is not recommended. Avoid repeated freeze/thaw cycles. Suggest spin the vial prior to opening. The antibody solution should be gently mixed before use.
Note	For laboratory research only, not for drug, diagnostic or other use.

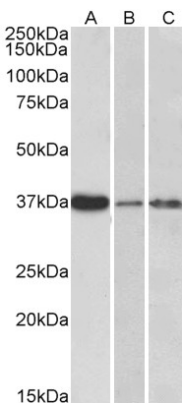
Database links	GeneID: 3593 Human Swiss-port # P29460 Human
Background	<p>This gene encodes a subunit of interleukin 12, a cytokine that acts on T and natural killer cells, and has a broad array of biological activities. Interleukin 12 is a disulfide-linked heterodimer composed of the 40 kD cytokine receptor like subunit encoded by this gene, and a 35 kD subunit encoded by IL12A. This cytokine is expressed by activated macrophages that serve as an essential inducer of Th1 cells development. This cytokine has been found to be important for sustaining a sufficient number of memory/effector Th1 cells to mediate long-term protection to an intracellular pathogen. Overexpression of this gene was observed in the central nervous system of patients with multiple sclerosis (MS), suggesting a role of this cytokine in the pathogenesis of the disease. The promoter polymorphism of this gene has been reported to be associated with the severity of atopic and non-atopic asthma in children. [provided by RefSeq, Jul 2008]</p>
Research Area	Cancer antibody; Immune System antibody
Calculated Mw	37 kDa
PTM	Known to be C-mannosylated in the recombinant protein; it is not yet known for sure if the wild-type protein is also modified.

Images



ARG64247 anti-IL12B / IL12 p40 antibody WB image

Western blot: Human Liver lysate (35 µg protein in RIPA buffer) stained with ARG64247 anti-IL12B / IL12 p40 antibody at 0.1 µg/ml dilution.



ARG64247 anti-IL12B / IL12 p40 antibody WB image

Western blot: 35 µg of Human liver (A), skin (B) and tonsil (C) lysates (in RIPA buffer) stained with ARG64247 anti-IL12B / IL12 p40 antibody at 0.3 µg/ml dilution and incubated at RT for 1 hour.