

ARG64245 anti-PDE11A antibody

Package: 100 µg
Store at: -20°C

Summary

Product Description	Goat Polyclonal antibody recognizes PDE11A
Tested Reactivity	Hu
Predict Reactivity	Ms, Rat, Dog
Tested Application	IHC-P, WB
Specificity	This antibody is expected to recognise all four reported isoforms (NP_058649.3 ; NP_001070665.1; NP_001070826.1; NP_001070664.1).
Host	Goat
Clonality	Polyclonal
Isotype	IgG
Target Name	PDE11A
Species	Human
Immunogen	C-NSFKESMEKSSYSD
Conjugation	Un-conjugated
Alternate Names	EC 3.1.4.35; PPNAD2; Dual 3',5'-cyclic-AMP and -GMP phosphodiesterase 11A; cAMP and cGMP phosphodiesterase 11A; EC 3.1.4.53

Application Instructions

Application table	Application	Dilution
	IHC-P	10 µg/ml
	WB	0.5 - 1.5 µg/ml
Application Note	WB: Recommend incubate at RT for 1h. IHC-P: Antigen Retrieval: Steam tissue section in Citrate buffer (pH 6.0). * The dilutions indicate recommended starting dilutions and the optimal dilutions or concentrations should be determined by the scientist.	

Properties

Form	Liquid
Purification	Purified from goat serum by antigen affinity chromatography.
Buffer	Tris saline (pH 7.3), 0.02% Sodium azide and 0.5% BSA.
Preservative	0.02% Sodium azide
Stabilizer	0.5% BSA
Concentration	0.5 mg/ml

Storage instruction	For continuous use, store undiluted antibody at 2-8°C for up to a week. For long-term storage, aliquot and store at -20°C or below. Storage in frost free freezers is not recommended. Avoid repeated freeze/thaw cycles. Suggest spin the vial prior to opening. The antibody solution should be gently mixed before use.
Note	For laboratory research only, not for drug, diagnostic or other use.

Bioinformation

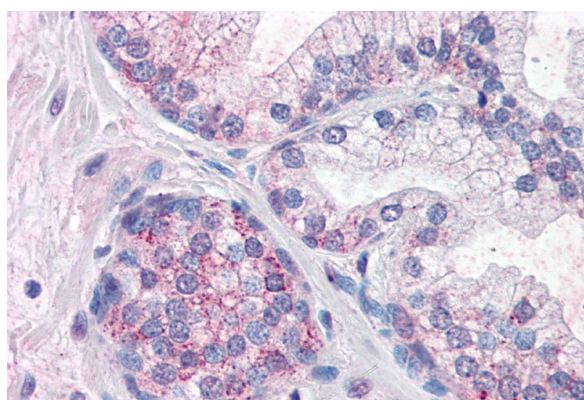
Database links	GeneID: 50940 Human Swiss-port # Q9HCR9 Human
Background	The 3',5'-cyclic nucleotides cAMP and cGMP function as second messengers in a wide variety of signal transduction pathways. 3',5'-cyclic nucleotide phosphodiesterases (PDEs) catalyze the hydrolysis of cAMP and cGMP to the corresponding 5'-monophosphates and provide a mechanism to downregulate cAMP and cGMP signaling. This gene encodes a member of the PDE protein superfamily. Mutations in this gene are a cause of Cushing disease and adrenocortical hyperplasia. Multiple transcript variants encoding different isoforms have been found for this gene. [provided by RefSeq, Jul 2008]
Research Area	Signaling Transduction antibody
Calculated Mw	105 kDa

Images



ARG64245 anti-PDE11A antibody WB image

Western Blot: Human Prostate lysate (35 µg protein in RIPA buffer) stained with ARG64245 anti-PDE11A antibody at 1 µg/ml dilution.



ARG64245 anti-PDE11A antibody IHC-P image

Immunohistochemistry: Paraffin-embedded Human prostate tissue. Antigen Retrieval: Steam tissue section in Citrate buffer (pH 6.0). The tissue section was stained with ARG64245 anti-PDE11A antibody at 10 µg/ml dilution followed by AP-staining.