

ARG64229 anti-PTF1A / PFT1-P48 antibody

Package: 100 µg
Store at: -20°C

Summary

Product Description	Goat Polyclonal antibody recognizes PTF1A / PFT1-P48
Tested Reactivity	Hu, Ms
Predict Reactivity	Dog, Rat, Zfsh
Tested Application	WB
Host	Goat
Clonality	Polyclonal
Isotype	IgG
Target Name	PTF1A / PFT1-P48
Species	Human
Immunogen	C-WTDEKQLKEQN
Conjugation	Un-conjugated
Alternate Names	p48 DNA-binding subunit of transcription factor PTF1; bHLHa29; Pancreas transcription factor 1 subunit alpha; Pancreas-specific transcription factor 1a; Class A basic helix-loop-helix protein 29; PACA; bHLH transcription factor p48; PAGEN2; PTF1-p48

Application Instructions

Application table	Application	Dilution
	WB	0.5 - 2 µg/ml
Application Note	WB: Recommend incubate at RT for 1h. * The dilutions indicate recommended starting dilutions and the optimal dilutions or concentrations should be determined by the scientist.	

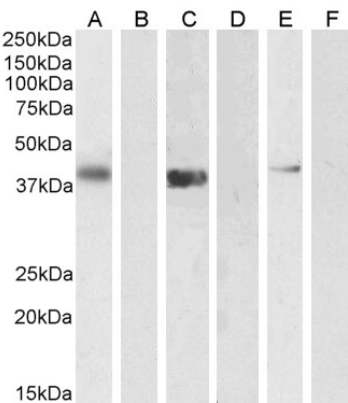
Properties

Form	Liquid
Purification	Purified from goat serum by antigen affinity chromatography.
Buffer	Tris saline (pH 7.3), 0.02% Sodium azide and 0.5% BSA.
Preservative	0.02% Sodium azide
Stabilizer	0.5% BSA
Concentration	0.5 mg/ml
Storage instruction	For continuous use, store undiluted antibody at 2-8°C for up to a week. For long-term storage, aliquot and store at -20°C or below. Storage in frost free freezers is not recommended. Avoid repeated freeze/thaw cycles. Suggest spin the vial prior to opening. The antibody solution should be gently mixed before use.

Bioinformation

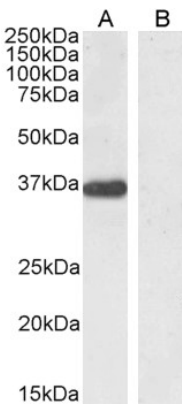
Database links	GeneID: 19213 Mouse GeneID: 256297 Human Swiss-port # Q7RTS3 Human Swiss-port # Q9QX98 Mouse
Background	This gene encodes a protein that is a component of the pancreas transcription factor 1 complex (PTF1) and is known to have a role in mammalian pancreatic development. The protein plays a role in determining whether cells allocated to the pancreatic buds continue towards pancreatic organogenesis or revert back to duodenal fates. The protein is thought to be involved in the maintenance of exocrine pancreas-specific gene expression including elastase 1 and amylase. Mutations in this gene cause cerebellar agenesis and loss of expression is seen in ductal type pancreas cancers. [provided by RefSeq, Jul 2008]
Research Area	Gene Regulation antibody; Neuroscience antibody
Calculated Mw	35 kDa

Images



ARG64229 anti-PTF1A / PFT1-P48 antibody WB image

Western blot: 35 µg of U2OS (A), U2OS + peptide (B), Jurkat (C), Jurkat + peptide (D), NIH/3T3 (E), NIH/3T3 + peptide (F) cell lysates (in RIPA buffer) stained with ARG64229 anti-PTF1A / PFT1-P48 antibody at 1 µg/ml (A, B) and 0.5 µg/ml (C-F) dilutions and incubated at RT for 1 hour.



ARG64229 anti-PTF1A / PFT1-P48 antibody WB image

Western blot: 35 µg of Human pancreas lysate (in RIPA buffer) stained with ARG64229 anti-PTF1A / PFT1-P48 antibody at 0.5 µg/ml dilution and incubated at RT for 1 hour.