

## ARG64180 anti-PSME1 antibody

Package: 100 µg  
Store at: -20°C

### Summary

Product Description	Goat Polyclonal antibody recognizes PSME1
Tested Reactivity	Hu
Predict Reactivity	Ms, Rat, Dog
Tested Application	WB
Specificity	This antibody is expected to recognise isoform 1 (NP_006254.1).
Host	Goat
Clonality	Polyclonal
Isotype	IgG
Target Name	PSME1
Species	Human
Immunogen	C-KNFEKLLKPRGETK
Conjugation	Un-conjugated
Alternate Names	REG-alpha; Proteasome activator 28 subunit alpha; PA28alpha; Activator of multicatalytic protease subunit 1; 11S regulator complex subunit alpha; Interferon gamma up-regulated I-5111 protein; PA28A; IGUP I-5111; IFI5111; Proteasome activator complex subunit 1; REGalpha; PA28a

### Application Instructions

Application table	<table> <tr> <th>Application</th><th>Dilution</th></tr> <tr> <td>WB</td><td>0.3 - 1 µg/ml</td></tr> </table>	Application	Dilution	WB	0.3 - 1 µg/ml
Application	Dilution				
WB	0.3 - 1 µg/ml				
Application Note	<p>WB: Recommend incubate at RT for 1h.</p> <p>* The dilutions indicate recommended starting dilutions and the optimal dilutions or concentrations should be determined by the scientist.</p>				

### Properties

Form	Liquid
Purification	Purified from goat serum by antigen affinity chromatography.
Buffer	Tris saline (pH 7.3), 0.02% Sodium azide and 0.5% BSA.
Preservative	0.02% Sodium azide
Stabilizer	0.5% BSA
Concentration	0.5 mg/ml
Storage instruction	For continuous use, store undiluted antibody at 2-8°C for up to a week. For long-term storage, aliquot and store at -20°C or below. Storage in frost free freezers is not recommended. Avoid repeated freeze/thaw cycles. Suggest spin the vial prior to opening. The antibody solution should be gently mixed

before use.

#### Note

For laboratory research only, not for drug, diagnostic or other use.

## Bioinformation

#### Database links

[GeneID: 5720 Human](#)

[Swiss-port # Q06323 Human](#)

#### Background

The 26S proteasome is a multicatalytic proteinase complex with a highly ordered structure composed of 2 complexes, a 20S core and a 19S regulator. The 20S core is composed of 4 rings of 28 non-identical subunits; 2 rings are composed of 7 alpha subunits and 2 rings are composed of 7 beta subunits. The 19S regulator is composed of a base, which contains 6 ATPase subunits and 2 non-ATPase subunits, and a lid, which contains up to 10 non-ATPase subunits. Proteasomes are distributed throughout eukaryotic cells at a high concentration and cleave peptides in an ATP/ubiquitin-dependent process in a non-lysosomal pathway. An essential function of a modified proteasome, the immunoproteasome, is the processing of class I MHC peptides. The immunoproteasome contains an alternate regulator, referred to as the 11S regulator or PA28, that replaces the 19S regulator. Three subunits (alpha, beta and gamma) of the 11S regulator have been identified. This gene encodes the alpha subunit of the 11S regulator, one of the two 11S subunits that is induced by gamma-interferon. Three alpha and three beta subunits combine to form a heterohexameric ring. Two transcripts encoding different isoforms have been identified. [provided by RefSeq, Jul 2008]

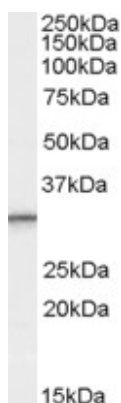
#### Research Area

Cell Biology and Cellular Response antibody

#### Calculated Mw

29 kDa

## Images



ARG64180 anti-PSME1 antibody WB image

Western Blot: Human Peripheral Blood Mononucleocyte lysate (35 µg protein in RIPA buffer) stained with ARG64180 anti-PSME1 (isoform 1) antibody at 0.3 µg/ml dilution.