

ARG64167 anti-Kallikrein 2 antibody

Package: 100 µg
Store at: -20°C

Summary

Product Description	Goat Polyclonal antibody recognizes Kallikrein 2
Tested Reactivity	Hu
Tested Application	IHC-P
Specificity	This antibody is expected to recognize both reported isoforms (NP_005542.1; NP_001002231.1).
Host	Goat
Clonality	Polyclonal
Isotype	IgG
Target Name	Kallikrein 2
Species	Human
Immunogen	C-KHQSLRPDEDSSHD
Conjugation	Un-conjugated
Alternate Names	hK2; Tissue kallikrein-2; EC 3.4.21.35; Glandular kallikrein-1; Kallikrein-2; hGK-1; KLK2A2

Application Instructions

Application table	Application	Dilution
	IHC-P	4 - 6 µg/ml
Application Note	IHC-P: Antigen Retrieval: Heat mediation was performed in Citrate buffer (pH 6.0). * The dilutions indicate recommended starting dilutions and the optimal dilutions or concentrations should be determined by the scientist.	

Properties

Form	Liquid
Purification	Purified from goat serum by antigen affinity chromatography.
Buffer	Tris saline (pH 7.3), 0.02% Sodium azide and 0.5% BSA.
Preservative	0.02% Sodium azide
Stabilizer	0.5% BSA
Concentration	0.5 mg/ml
Storage instruction	For continuous use, store undiluted antibody at 2-8°C for up to a week. For long-term storage, aliquot and store at -20°C or below. Storage in frost free freezers is not recommended. Avoid repeated freeze/thaw cycles. Suggest spin the vial prior to opening. The antibody solution should be gently mixed before use.
Note	For laboratory research only, not for drug, diagnostic or other use.

Bioinformation

Database links

[GeneID: 3817 Human](#)

[Swiss-port # P20151 Human](#)

Background

This gene encodes a member of the grandular kallikrein protein family. Kallikreins are a subgroup of serine proteases that are clustered on chromosome 19. Members of this family are involved in a diverse array of biological functions. The protein encoded by this gene is a highly active trypsin-like serine protease that selectively cleaves at arginine residues. This protein is primarily expressed in prostatic tissue and is responsible for cleaving pro-prostate-specific antigen into its enzymatically active form. This gene is highly expressed in prostate tumor cells and may be a prognostic maker for prostate cancer risk. Alternate splicing results in both coding and non-coding transcript variants. [provided by RefSeq, Jan 2012]

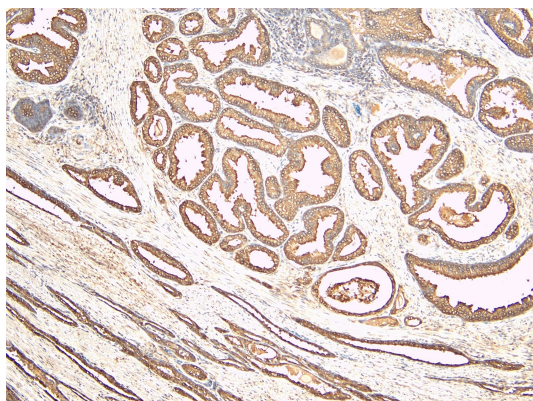
Research Area

Cancer antibody; Cell Biology and Cellular Response antibody; Signaling Transduction antibody

Calculated Mw

29 kDa

Images



ARG64167 anti-Kallikrein 2 antibody IHC-P image

Immunohistochemistry: Paraffin-embedded Human prostate tissue. Antigen Retrieval: Heat mediation was performed in Citrate buffer (pH 6.0). The tissue section was stained with ARG64167 anti-Kallikrein 2 antibody at 6 µg/ml dilution followed by HRP-staining.