

## ARG64101 anti-S100A4 antibody

Package: 100 µg  
Store at: -20°C

### Summary

|                     |  |
|---------------------|--|
| Product Description | Goat Polyclonal antibody recognizes S100A4   |
| Tested Reactivity   | Hu   |
| Predict Reactivity  | Ms, Rat, Dog   |
| Tested Application  | IHC-P, WB  |
| Specificity         | Both variants (NP_002952.1; NP_062427.1) represent identical protein.  |
| Host                | Goat   |
| Clonality           | Polyclonal   |
| Isotype             | IgG  |
| Target Name         | S100A4   |
| Species             | Human  |
| Immunogen           | CNEFFEGFPDKQP  |
| Conjugation         | Un-conjugated  |
| Alternate Names     | S100 calcium-binding protein A4; Placental calcium-binding protein; 42A; MTS1; FSP1; CAPL; Metastasin; Protein S100-A4; P9KA; 18A2; Protein Mts1; Calvasculin; PEL98 |

### Application Instructions

|                   |  |                  |
|-------------------|--|------------------|
| Application table | Application  | Dilution         |
|                   | IHC-P  | 1 - 2 µg/ml      |
|                   | WB   | 0.05 - 0.2 µg/ml |
| Application Note  | WB: Recommend incubate at RT for 1h.<br>IHC-P: Antigen Retrieval: Steam tissue section in Citrate buffer (pH 6.0).<br>* The dilutions indicate recommended starting dilutions and the optimal dilutions or concentrations should be determined by the scientist. |                  |

### Properties

|                     |   |
|---------------------|---|
| Form                | Liquid  |
| Purification        | Purified from goat serum by antigen affinity chromatography.  |
| Buffer              | Tris saline (pH 7.3), 0.02% Sodium azide and 0.5% BSA.  |
| Preservative        | 0.02% Sodium azide  |
| Stabilizer          | 0.5% BSA  |
| Concentration       | 0.5 mg/ml   |
| Storage instruction | For continuous use, store undiluted antibody at 2-8°C for up to a week. For long-term storage, aliquot and store at -20°C or below. Storage in frost free freezers is not recommended. Avoid repeated |

freeze/thaw cycles. Suggest spin the vial prior to opening. The antibody solution should be gently mixed before use.

Note

For laboratory research only, not for drug, diagnostic or other use.

## Bioinformation

Database links

[GeneID: 6275 Human](#)

[Swiss-port # P26447 Human](#)

Background

The protein encoded by this gene is a member of the S100 family of proteins containing 2 EF-hand calcium-binding motifs. S100 proteins are localized in the cytoplasm and/or nucleus of a wide range of cells, and involved in the regulation of a number of cellular processes such as cell cycle progression and differentiation. S100 genes include at least 13 members which are located as a cluster on chromosome 1q21. This protein may function in motility, invasion, and tubulin polymerization. Chromosomal rearrangements and altered expression of this gene have been implicated in tumor metastasis. Multiple alternatively spliced variants, encoding the same protein, have been identified. [provided by RefSeq, Jul 2008]

Highlight

Related products:

[S100A4 antibodies](#); [S100A4 Duos / Panels](#); [Anti-Goat IgG secondary antibodies](#);

Related news:

[New antibody panels for Myofibroblasts and CAFs](#)

Research Area

Cancer antibody; Cell Biology and Cellular Response antibody; Signaling Transduction antibody

Calculated Mw

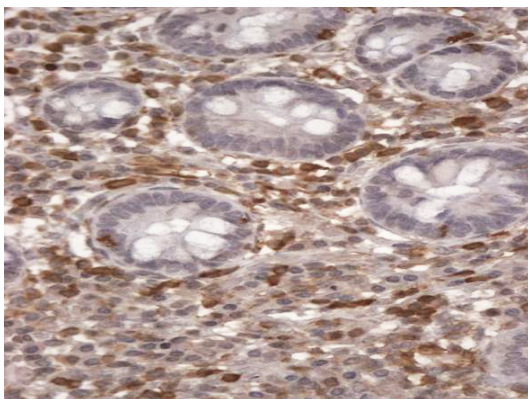
12 kDa

## Images



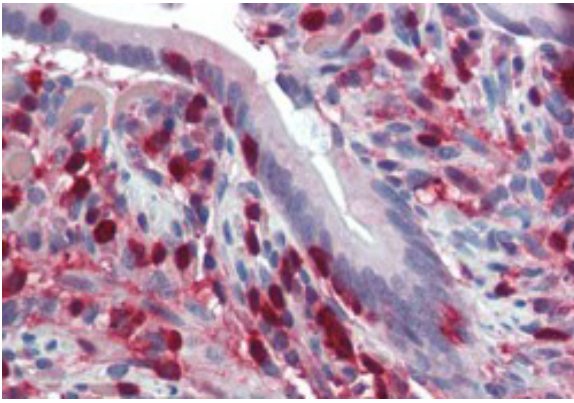
ARG64101 anti-S100A4 / CAPL antibody WB image

Western Blot: Human Placenta lysate (35 µg protein in RIPA buffer) stained with ARG64101 anti-S100A4 / CAPL antibody at 0.03 µg/ml dilution.



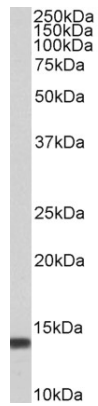
ARG64101 anti-S100A4 antibody IHC-P image

Immunohistochemistry: Paraffin-embedded Human small intestine tissue. Antigen Retrieval: Steam tissue section in Citrate buffer (pH 6.0). The tissue section was stained with ARG64101 anti-S100A4 antibody at 2 µg/ml dilution followed by HRP-staining.



ARG64101 anti-S100A4 / CAPL antibody IHC-P image

Immunohistochemistry: paraffin embedded Human Small Intestine. (Steamed antigen retrieval with citrate buffer pH 6) stained with ARG64101 anti-S100A4 / CAPL antibody at 2.5 µg/ml dilution followed by AP-staining.



ARG64101 anti-S100A4 antibody WB image

Western blot: 35 µg of peripheral blood mononuclear cell lysates (in RIPA buffer) stained with ARG64101 anti-S100A4 antibody at 0.05 µg/ml dilution and incubated at RT for 1 hour.