

ARG64080 anti-CNTFR antibody

Package: 100 µg
Store at: -20°C

Summary

Product Description	Goat Polyclonal antibody recognizes CNTFR
Tested Reactivity	Ms
Predict Reactivity	Hu, Rat, Dog
Tested Application	WB
Specificity	This antibody is expected to recognise both reported isoforms (NP_671693.1; NP_001833.1).
Host	Goat
Clonality	Polyclonal
Isotype	IgG
Target Name	CNTFR
Species	Human
Immunogen	CRSNTYPKGFY
Conjugation	Un-conjugated
Alternate Names	Ciliary neurotrophic factor receptor subunit alpha; CNTFR-alpha; CNTF receptor subunit alpha

Application Instructions

Application table	Application	Dilution
	WB	0.3 - 1 µg/ml
Application Note	WB: Recommend incubate at RT for 1h. * The dilutions indicate recommended starting dilutions and the optimal dilutions or concentrations should be determined by the scientist.	

Properties

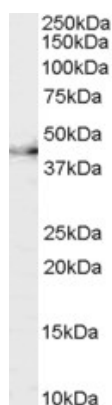
Form	Liquid
Purification	Purified from goat serum by antigen affinity chromatography.
Buffer	Tris saline (pH 7.3), 0.02% Sodium azide and 0.5% BSA.
Preservative	0.02% Sodium azide
Stabilizer	0.5% BSA
Concentration	0.5 mg/ml
Storage instruction	For continuous use, store undiluted antibody at 2-8°C for up to a week. For long-term storage, aliquot and store at -20°C or below. Storage in frost free freezers is not recommended. Avoid repeated freeze/thaw cycles. Suggest spin the vial prior to opening. The antibody solution should be gently mixed before use.

Note For laboratory research only, not for drug, diagnostic or other use.

Bioinformation

Database links	GeneID: 12804 Mouse Swiss-port # O88507 Mouse
Background	This gene encodes a member of the type 1 cytokine receptor family. The encoded protein is the ligand-specific component of a tripartite receptor for ciliary neurotrophic factor, which plays a critical role in neuronal cell survival, differentiation and gene expression. Binding of ciliary neurotrophic factor to the encoded protein recruits the transmembrane components of the receptor, gp130 and leukemia inhibitory factor receptor, facilitating signal transduction. Single nucleotide polymorphisms in this gene may be associated with variations in muscle strength, as well as early onset of eating disorders. Alternatively spliced transcript variants have been observed for this gene. [provided by RefSeq, May 2011]
Research Area	Neuroscience antibody; Signaling Transduction antibody
Calculated Mw	41 kDa

Images



ARG64080 anti-CNTFR antibody WB image

Western Blot: mouse brain lysate (35 µg protein in RIPA buffer) stained with ARG64080 anti-CNTFR antibody at 0.3 µg/ml dilution.