

## ARG64011 anti-CHRM1 / M1 mAChR antibody

Package: 100 µg  
Store at: -20°C

### Summary

Product Description	Goat Polyclonal antibody recognizes CHRM1 / M1 mAChR
Tested Reactivity	Ms
Predict Reactivity	Hu, Rat, Dog
Tested Application	WB
Host	Goat
Clonality	Polyclonal
Isotype	IgG
Target Name	CHRM1 / M1 mAChR
Species	Human
Immunogen	C-DKRRWRKIPKRPQSVH
Conjugation	Un-conjugated
Alternate Names	Muscarinic acetylcholine receptor M1; M1R; M1; HM1

### Application Instructions

Application table	Application	Dilution
	WB	0.3 - 1 µg/ml
Application Note	WB: Recommend incubate at RT for 1h. * The dilutions indicate recommended starting dilutions and the optimal dilutions or concentrations should be determined by the scientist.	

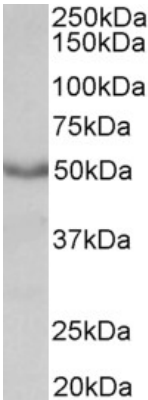
### Properties

Form	Liquid
Purification	Purified from goat serum by antigen affinity chromatography.
Buffer	Tris saline (pH 7.3), 0.02% Sodium azide and 0.5% BSA.
Preservative	0.02% Sodium azide
Stabilizer	0.5% BSA
Concentration	0.5 mg/ml
Storage instruction	For continuous use, store undiluted antibody at 2-8°C for up to a week. For long-term storage, aliquot and store at -20°C or below. Storage in frost free freezers is not recommended. Avoid repeated freeze/thaw cycles. Suggest spin the vial prior to opening. The antibody solution should be gently mixed before use.
Note	For laboratory research only, not for drug, diagnostic or other use.

Bioinformation

Database links	<a href="#">GeneID: 12669 Mouse</a>  <a href="#">Swiss-port # P12657 Mouse</a>
Background	The muscarinic cholinergic receptors belong to a larger family of G protein-coupled receptors. The functional diversity of these receptors is defined by the binding of acetylcholine and includes cellular responses such as adenylate cyclase inhibition, phosphoinositide degeneration, and potassium channel mediation. Muscarinic receptors influence many effects of acetylcholine in the central and peripheral nervous system. The muscarinic cholinergic receptor 1 is involved in mediation of vagally-induced bronchoconstriction and in the acid secretion of the gastrointestinal tract. The gene encoding this receptor is localized to 11q13. [provided by RefSeq, Jul 2008]
Research Area	Neuroscience antibody
Calculated Mw	51 kDa

Images



ARG64011 anti-CHRM1 / M1 mAChR antibody WB image

Western blot: Mouse Heart lysate (35 µg protein in RIPA buffer) stained with ARG64011 anti-CHRM1 / M1 mAChR antibody at 0.3 µg/ml dilution.