

ARG64009 anti-TNS1 / Tensin 1 antibody

Package: 100 µg
Store at: -20°C

Summary

Product Description	Goat Polyclonal antibody recognizes TNS1 / Tensin 1
Tested Reactivity	Hu
Predict Reactivity	Ms, Rat, Cow, Dog
Tested Application	IHC-P
Host	Goat
Clonality	Polyclonal
Isotype	IgG
Target Name	TNS1 / Tensin 1
Species	Human
Immunogen	C-VSKVMLNAGQKR
Conjugation	Un-conjugated
Alternate Names	Tensin-1; PPP1R155; TNS; MST127; MSTP127; MSTP122; MST122; MST091; MSTP091; MXRA6

Application Instructions

Application table	Application	Dilution
	IHC-P	4 - 6 µg/ml
Application Note	IHC-P: Antigen Retrieval: Steam tissue section in Tris/EDTA buffer (pH 9.0). * The dilutions indicate recommended starting dilutions and the optimal dilutions or concentrations should be determined by the scientist.	

Properties

Form	Liquid
Purification	Purified from goat serum by antigen affinity chromatography.
Buffer	Tris saline (pH 7.3), 0.02% Sodium azide and 0.5% BSA.
Preservative	0.02% Sodium azide
Stabilizer	0.5% BSA
Concentration	0.5 mg/ml
Storage instruction	For continuous use, store undiluted antibody at 2-8°C for up to a week. For long-term storage, aliquot and store at -20°C or below. Storage in frost free freezers is not recommended. Avoid repeated freeze/thaw cycles. Suggest spin the vial prior to opening. The antibody solution should be gently mixed before use.
Note	For laboratory research only, not for drug, diagnostic or other use.

Bioinformation

Database links

[GeneID: 7145 Human](#)

[Swiss-port # Q9HBL0 Human](#)

Background

The protein encoded by this gene localizes to focal adhesions, regions of the plasma membrane where the cell attaches to the extracellular matrix. This protein crosslinks actin filaments and contains a Src homology 2 (SH2) domain, which is often found in molecules involved in signal transduction. This protein is a substrate of calpain II. A second transcript from this gene has been described, but its full length nature has not been determined. [provided by RefSeq, Jul 2008]

Research Area

Signaling Transduction antibody

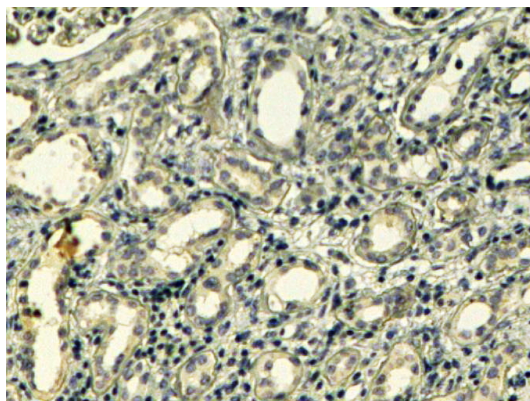
Calculated Mw

186 kDa

PTM

Rapidly cleaved by calpain II.

Images



ARG64009 anti-TNS1 / Tensin 1 antibody IHC-P image

Immunohistochemistry: Paraffin embedded Human Kidney. (Steamed antigen retrieval with Tris/EDTA buffer pH 9) stained with ARG64009 anti-TNS1 / Tensin 1 antibody at 4 µg/ml dilution followed by HRP-staining.