

ARG64000 anti-Semaphorin 5A antibody

Package: 100 µg
Store at: -20°C

Summary

Product Description	Goat Polyclonal antibody recognizes Semaphorin 5A
Tested Reactivity	Hu
Predict Reactivity	Ms, Rat, Cow, Dog
Tested Application	IHC-P
Specificity	The immunizing peptide corresponds to a part of the extracellular domain.
Host	Goat
Clonality	Polyclonal
Isotype	IgG
Target Name	Semaphorin 5A
Species	Human
Immunogen	DEATKKACYSKGKS
Conjugation	Un-conjugated
Alternate Names	semF; Semaphorin-5A; Sema F; SEMAF; Semaphorin-F

Application Instructions

Application table	Application	Dilution
	IHC-P	4 - 6 µg/ml
Application Note	IHC-P: Antigen Retrieval: Steam tissue section in Citrate buffer (pH 6.0). * The dilutions indicate recommended starting dilutions and the optimal dilutions or concentrations should be determined by the scientist.	

Properties

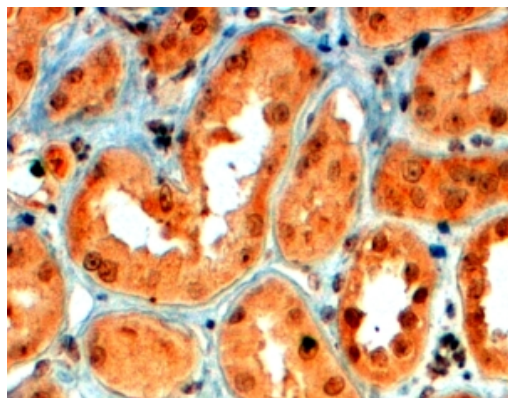
Form	Liquid
Purification	Purified from goat serum by antigen affinity chromatography.
Buffer	Tris saline (pH 7.3), 0.02% Sodium azide and 0.5% BSA.
Preservative	0.02% Sodium azide
Stabilizer	0.5% BSA
Concentration	0.5 mg/ml
Storage instruction	For continuous use, store undiluted antibody at 2-8°C for up to a week. For long-term storage, aliquot and store at -20°C or below. Storage in frost free freezers is not recommended. Avoid repeated freeze/thaw cycles. Suggest spin the vial prior to opening. The antibody solution should be gently mixed before use.

Note For laboratory research only, not for drug, diagnostic or other use.

Bioinformation

Database links	GeneID: 9037 Human Swiss-port # Q13591 Human
Background	This gene belongs to the semaphorin gene family that encodes membrane proteins containing a semaphorin domain and several thrombospondin type-1 repeats. Members of this family are involved in axonal guidance during neural development. This gene has been implicated as an autism susceptibility gene.[provided by RefSeq, Jan 2010]
Research Area	Neuroscience antibody
Calculated Mw	121 kDa

Images



ARG64000 anti-Semaphorin 5A antibody IHC-P image

Immunohistochemistry: paraffin embedded Human Kidney. (Steamed antigen retrieval with citrate buffer pH 6) stained with ARG64000 anti-Semaphorin 5A antibody at 4 µg/ml dilution followed by HRP-staining.