

ARG63991 anti-Robo1 / DUTT1 antibody

Package: 100 µg
Store at: -20°C

Summary

Product Description	Goat Polyclonal antibody recognizes Robo1 / DUTT1
Tested Reactivity	Hu
Predict Reactivity	Ms, Rat, Cow, Dog
Tested Application	FACS, ICC/IF, IHC-P, WB
Specificity	This antibody is expected to recognise all reported isoforms (NP_002932.1; NP_598334.1; NP_001139316.1; NP_001139317.1).
Host	Goat
Clonality	Polyclonal
Isotype	IgG
Target Name	Robo1 / DUTT1
Species	Human
Immunogen	C-GDVLSNKNEMK
Conjugation	Un-conjugated
Alternate Names	Deleted in U twenty twenty; H-Robo-1; DUTT1; Roundabout homolog 1; SAX3

Application Instructions

Application table	Application	Dilution
	FACS	10 µg/ml
	ICC/IF	10 µg/ml
	IHC-P	2 µg/ml
	WB	1 µg/ml
Application Note	WB: Recommend incubate at RT for 1h. IHC-P: Antigen Retrieval: Steam tissue section in Citrate buffer (pH 6.0). * The dilutions indicate recommended starting dilutions and the optimal dilutions or concentrations should be determined by the scientist.	

Properties

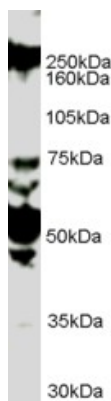
Form	Liquid
Purification	Purified from goat serum by antigen affinity chromatography.
Buffer	Tris saline (pH 7.3), 0.02% Sodium azide and 0.5% BSA.
Preservative	0.02% Sodium azide
Stabilizer	0.5% BSA

Concentration	0.5 mg/ml
Storage instruction	For continuous use, store undiluted antibody at 2-8°C for up to a week. For long-term storage, aliquot and store at -20°C or below. Storage in frost free freezers is not recommended. Avoid repeated freeze/thaw cycles. Suggest spin the vial prior to opening. The antibody solution should be gently mixed before use.
Note	For laboratory research only, not for drug, diagnostic or other use.

Bioinformation

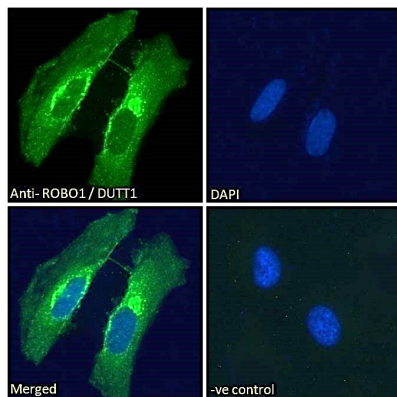
Database links	GeneID: 6091 Human Swiss-port # Q9Y6N7 Human
Background	Bilateral symmetric nervous systems have special midline structures that establish a partition between the two mirror image halves. Some axons project toward and across the midline in response to long-range chemoattractants emanating from the midline. The product of this gene is a member of the immunoglobulin gene superfamily and encodes an integral membrane protein that functions in axon guidance and neuronal precursor cell migration. This receptor is activated by SLIT-family proteins, resulting in a repulsive effect on glioma cell guidance in the developing brain. A related gene is located at an adjacent region on chromosome 3. Multiple transcript variants encoding different isoforms have been found for this gene. [provided by RefSeq, Mar 2009]
Research Area	Cancer antibody; Neuroscience antibody
Calculated Mw	181 kDa
PTM	Ubiquitinated. May be deubiquitinated by USP33.

Images



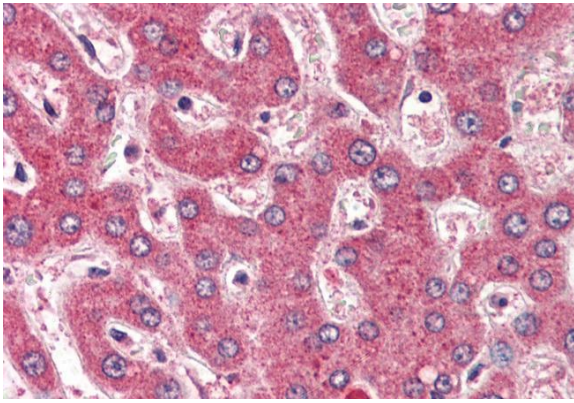
ARG63991 anti-Robo1 / DUTT1 antibody WB image

Western blot: HUVEC lysate (35 µg protein in RIPA buffer) stained with ARG63991 anti-Robo1 / DUTT1 antibody at 1 µg/ml dilution.



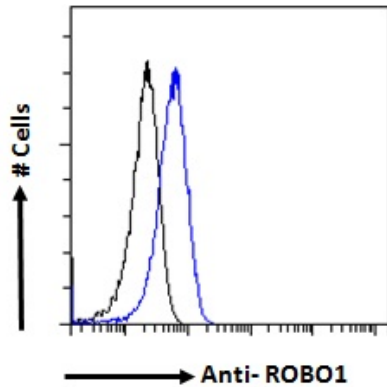
ARG63991 anti-Robo1 / DUTT1 antibody ICC/IF image

Immunofluorescence: Paraformaldehyde fixed HeLa cells permeabilized with 0.15% Triton. Cells were stained with ARG63991 anti-Robo1 / DUTT1 antibody (green) at 10 µg/ml dilution for 1 hour. DAPI (blue) for nuclear staining. Negative control: Unimmunized goat IgG (green) at 10 µg/ml dilution.



ARG63991 anti-Robo1 / DUTT1 antibody IHC-P image

Immunohistochemistry: Paraffin-embedded Human liver tissue. Antigen Retrieval: Steam tissue section in Citrate buffer (pH 6.0). The tissue section was stained with ARG63991 anti-Robo1 / DUTT1 antibody at 2 µg/ml dilution followed by AP-staining.



ARG63991 anti-Robo1 / DUTT1 antibody FACS image

Flow Cytometry: Paraformaldehyde-fixed HeLa cells permeabilized with 0.5% Triton. Cells were stained with ARG63991 anti-Robo1 / DUTT1 antibody (blue line) at 10 µg/ml dilution and overnight, followed by incubation with Alexa FluorR 488 labelled secondary antibody. IgG control: Unimmunized goat IgG (black line).