

## ARG63968 anti-Ezrin antibody

Package: 100 µg, 50 µg  
Store at: -20°C

### Summary

Product Description	Goat Polyclonal antibody recognizes Ezrin
Tested Reactivity	Hu
Predict Reactivity	Dog
Tested Application	IHC-P, WB
Host	Goat
Clonality	Polyclonal
Isotype	IgG
Target Name	Ezrin
Species	Human
Immunogen	C-QDYEEKTKKAER
Conjugation	Un-conjugated
Alternate Names	Ezrin; p81; HEL-S-105; VIL2; CVL; Cytovillin; CVIL; Villin-2

### Application Instructions

Application table	Application	Dilution
	IHC-P	3 - 5 µg/ml
	WB	1 - 3 µg/ml
Application Note	WB: Recommend incubate at RT for 1h. IHC-P: Antigen Retrieval: Steam tissue section in Citrate buffer (pH 6.0). * The dilutions indicate recommended starting dilutions and the optimal dilutions or concentrations should be determined by the scientist.	

### Properties

Form	Liquid
Purification	Purified from goat serum by antigen affinity chromatography.
Buffer	Tris saline (pH 7.3), 0.02% Sodium azide and 0.5% BSA.
Preservative	0.02% Sodium azide
Stabilizer	0.5% BSA
Concentration	0.5 mg/ml
Storage instruction	For continuous use, store undiluted antibody at 2-8°C for up to a week. For long-term storage, aliquot and store at -20°C or below. Storage in frost free freezers is not recommended. Avoid repeated freeze/thaw cycles. Suggest spin the vial prior to opening. The antibody solution should be gently mixed before use.

## Bioinformation

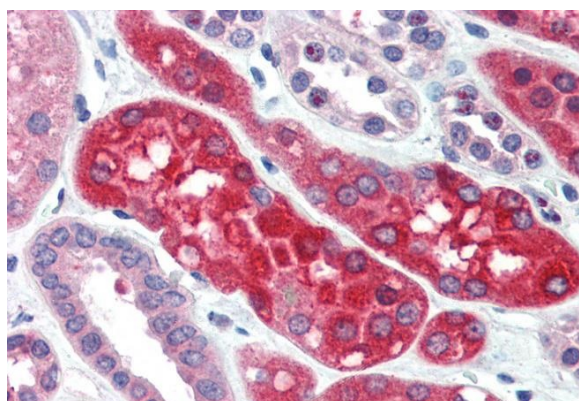
Database links	<a href="#">GeneID: 7430 Human</a> <a href="#">Swiss-port # P15311 Human</a>
Background	The cytoplasmic peripheral membrane protein encoded by this gene functions as a protein-tyrosine kinase substrate in microvilli. As a member of the ERM protein family, this protein serves as an intermediate between the plasma membrane and the actin cytoskeleton. This protein plays a key role in cell surface structure adhesion, migration and organization, and it has been implicated in various human cancers. A pseudogene located on chromosome 3 has been identified for this gene. Alternatively spliced variants have also been described for this gene. [provided by RefSeq, Jul 2008]
Highlight	Related Antibody Duos and Panels: <a href="#">ARG30231 Phospho Ezrin Antibody Duo (Total, pT567)</a> Related products: <a href="#">Ezrin antibodies</a> ; <a href="#">Ezrin Duos / Panels</a> ; <a href="#">Anti-Goat IgG secondary antibodies</a> ;
Research Area	Cancer antibody; Signaling Transduction antibody
Calculated Mw	69 kDa
PTM	Phosphorylated by tyrosine-protein kinases. Phosphorylation by ROCK2 suppresses the head-to-tail association of the N-terminal and C-terminal halves resulting in an opened conformation which is capable of actin and membrane-binding (By similarity). S-nitrosylation is induced by interferon-gamma and oxidatively-modified low-density lipoprotein (LDL(ox)) possibly implicating the iNOS-S100A8/9 transnitrosylase complex.

## Images



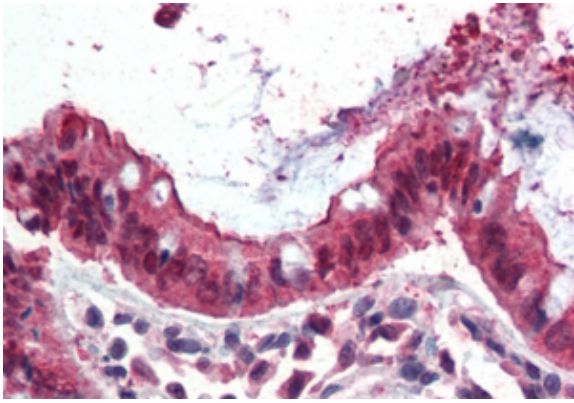
ARG63968 anti-Ezrin antibody WB image

Western blot: Human Placenta lysate (35 µg protein in RIPA buffer) stained with ARG63968 anti-Ezrin antibody at 1 µg/ml dilution.



ARG63968 anti-Ezrin antibody IHC-P image

Immunohistochemistry: Paraffin-embedded Human kidney tissue. Antigen Retrieval: Steam tissue section in Citrate buffer (pH 6.0). The tissue section was stained with ARG63968 anti-Ezrin antibody at 3.75 µg/ml dilution followed by AP-staining.



ARG63968 anti-Ezrin antibody IHC-P image

Immunohistochemistry: Paraffin embedded Human Small Intestine. (Steamed antigen retrieval with citrate buffer pH 6) stained with ARG63968 anti-Ezrin antibody at 3.8 µg/ml dilution followed by AP-staining.