

ARG63963 anti-CD230 / Prion protein antibody

Package: 100 µg
Store at: -20°C

Summary

Product Description	Goat Polyclonal antibody recognizes CD230 / Prion protein
Tested Reactivity	Hu
Predict Reactivity	Cow, Pig
Tested Application	WB
Specificity	Reported variants represent identical protein (NP_000302.1; NP_898902.1; NP_001073590.1; NP_001073591.1; NP_001073592.1).
Host	Goat
Clonality	Polyclonal
Isotype	IgG
Target Name	CD230 / Prion protein
Species	Human
Immunogen	C-SDYEDRYREN
Conjugation	Un-conjugated
Alternate Names	GSS; PrPc; PrP33-35C; PrP27-30; Alternative prion protein; p27-30; CJD; ASCR; CD230; PrP; PRIP; KURU; AltPrP

Application Instructions

Application table	Application	Dilution
	WB	0.3 - 1 µg/ml
Application Note	WB: Recommend incubate at RT for 1h. * The dilutions indicate recommended starting dilutions and the optimal dilutions or concentrations should be determined by the scientist.	

Properties

Form	Liquid
Purification	Purified from goat serum by antigen affinity chromatography.
Buffer	Tris saline (pH 7.3), 0.02% Sodium azide and 0.5% BSA.
Preservative	0.02% Sodium azide
Stabilizer	0.5% BSA
Concentration	0.5 mg/ml
Storage instruction	For continuous use, store undiluted antibody at 2-8°C for up to a week. For long-term storage, aliquot and store at -20°C or below. Storage in frost free freezers is not recommended. Avoid repeated freeze/thaw cycles. Suggest spin the vial prior to opening. The antibody solution should be gently mixed

before use.

Note

For laboratory research only, not for drug, diagnostic or other use.

Bioinformation

Database links

[GeneID: 5621 Human](#)

[Swiss-port # F7VJQ1 Human](#)

Background

The protein encoded by this gene is a membrane glycosylphosphatidylinositol-anchored glycoprotein that tends to aggregate into rod-like structures. The encoded protein contains a highly unstable region of five tandem octapeptide repeats. This gene is found on chromosome 20, approximately 20 kbp upstream of a gene which encodes a biochemically and structurally similar protein to the one encoded by this gene. Mutations in the repeat region as well as elsewhere in this gene have been associated with Creutzfeldt-Jakob disease, fatal familial insomnia, Gerstmann-Straussler disease, Huntington disease-like 1, and kuru. Alternative splicing results in multiple transcript variants encoding the same protein. [provided by RefSeq, Jul 2008]

Research Area

Developmental Biology antibody; Neuroscience antibody

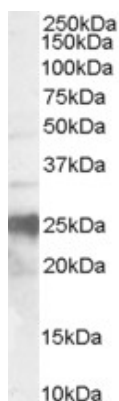
Calculated Mw

9 kDa

PTM

The glycosylation pattern (the amount of mono-, di- and non-glycosylated forms or glycoforms) seems to differ in normal and CJD prion.
Isoform 2 is sumoylated with SUMO1.

Images



ARG63963 anti-CD230 / Prion protein antibody WB image

Western blot: Human Brain lysate (35 µg protein in RIPA buffer) stained with ARG63963 anti-CD230 / Prion protein antibody at 0.3 µg/ml dilution.