

ARG63952 anti-PGRMC1 / MPR antibody

Package: 100 µg
Store at: -20°C

Summary

Product Description	Goat Polyclonal antibody recognizes PGRMC1 / MPR
Tested Reactivity	Hu, Ms
Predict Reactivity	Rat
Tested Application	IHC-P, WB
Host	Goat
Clonality	Polyclonal
Isotype	IgG
Target Name	PGRMC1 / MPR
Species	Human
Immunogen	C-EPKDESARKND
Conjugation	Un-conjugated
Alternate Names	mPR; HPR6.6; MPR; Membrane-associated progesterone receptor component 1

Application Instructions

Application table	Application	Dilution
	IHC-P	5 µg/ml
	WB	0.1 - 0.3 µg/ml
Application Note	WB: Recommend incubate at RT for 1h. IHC-P: Antigen Retrieval: Steam tissue section in Citrate buffer (pH 6.0). * The dilutions indicate recommended starting dilutions and the optimal dilutions or concentrations should be determined by the scientist.	

Properties

Form	Liquid
Purification	Purified from goat serum by antigen affinity chromatography.
Buffer	Tris saline (pH 7.3), 0.02% Sodium azide and 0.5% BSA.
Preservative	0.02% Sodium azide
Stabilizer	0.5% BSA
Concentration	0.5 mg/ml
Storage instruction	For continuous use, store undiluted antibody at 2-8°C for up to a week. For long-term storage, aliquot and store at -20°C or below. Storage in frost free freezers is not recommended. Avoid repeated freeze/thaw cycles. Suggest spin the vial prior to opening. The antibody solution should be gently mixed before use.

Bioinformation

Database links

[GeneID: 10857 Human](#)[GeneID: 53328 Mouse](#)[Swiss-port # O00264 Human](#)[Swiss-port # O55022 Mouse](#)

Background

This gene encodes a putative membrane-associated progesterone steroid receptor. The protein is expressed predominantly in the liver and kidney. [provided by RefSeq, Mar 2010]

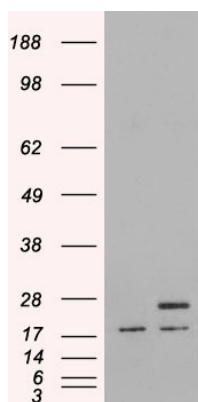
Research Area

Cancer antibody; Cell Biology and Cellular Response antibody; Signaling Transduction antibody

Calculated Mw

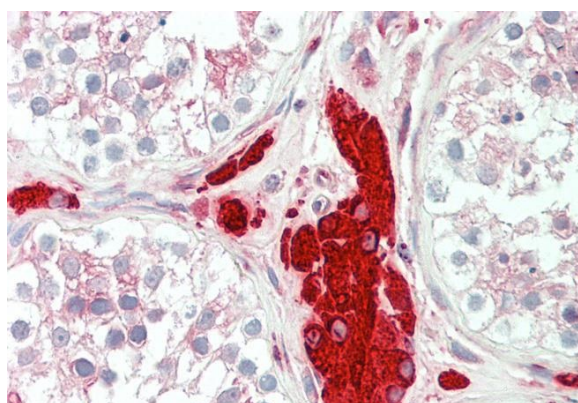
22 kDa

Images



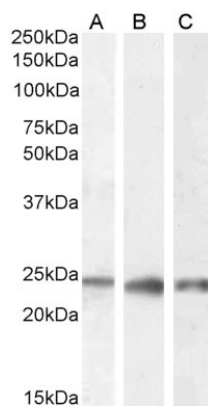
ARG63952 anti-PGRMC1 / MPR antibody WB image

Western Blot: 1). Mock transfection; 2) Human PGRMC1 (RC201918) expressing plasmid transfected HEK293 cell lysate stand with ARG63952 anti-PGRMC1 / MPR antibody



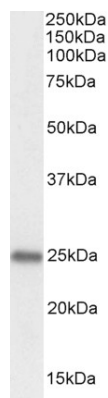
ARG63952 anti-PGRMC1 / MPR antibody IHC-P image

Immunohistochemistry: Paraffin-embedded Human testis tissue. Antigen Retrieval: Steam tissue section in Citrate buffer (pH 6.0). The tissue section was stained with ARG63952 anti-PGRMC1 / MPR antibody at 5 µg/ml dilution followed by AP-staining.



ARG63952 anti-PGRMC1 / MPR antibody WB image

Western blot: 35 µg of Human kidney (A), liver (B) and testis (C) lysates (in RIPA buffer) stained with ARG63952 anti-PGRMC1 / MPR antibody at 0.1 µg/ml dilution and incubated at RT for 1 hour.



ARG63952 anti-PGRMC1 / MPR antibody WB image

Western blot: 35 µg of Mouse testis lysate (in RIPA buffer) stained with ARG63952 anti-PGRMC1 / MPR antibody at 0.1 µg/ml dilution and incubated at RT for 1 hour.